

## Anti-PRDM14 antibody (1-260) (STJ27532)

### GENERAL INFORMATION

Product Type	Primary antibodies
Applications	WB/IHC-P/ELISA/ChIP
Host / Source	Rabbit
Reactivity	Human/Mouse/Rat

### PRODUCT PROPERTIES

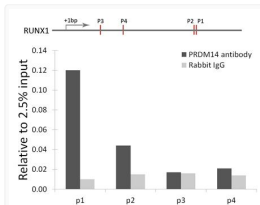
Clonality	Polyclonal
Concentration	Lot specific
Conjugation	Unconjugated
Purification	Affinity purification
Dilution Range	WB:1:500-1:1000 IHC-P:1:50-1:200 ELISA:Recommended starting concentration is 1 Mu g/mL. Please optimize the concentration based on your specific assay requirements. ChIP:5 Mu g antibody for 10 Mu g of Chromatin
Formulation	PBS with 0.09% Sodium Azide, 50% Glycerol, pH 7.3.
Isotype	IgG
Molecular Weight	Protein Mw: 64kDa Observed Mw: 70kDa
Storage Instruction	Store at -20°C for up to 1 year from the date of receipt, and avoid repeat freeze-thaw cycles.

### TARGET INFORMATION

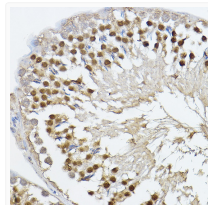
Gene ID	<a href="#">63978</a>
Gene Symbol	<a href="#">PRDM14</a>
UniProt ID	<a href="#">PRD14_HUMAN</a>
Immunogen Region	1-260
Immunogen Sequence	MALPRPSEAVPQDKVCYPPE SSPQNLAAYTFFPSYGHYR NSLATVEEDFQPFRRQLEAAA SAAPAMPFFFRMAPLLSP GLGLQREPLYDLPWYSKLP WYPIPHVPREVPPFLSSSHE YAGASSEDLGHQIGGDNES GPCCGPDTLIPPPADASLL PEGLRTSQQLLPCSPSKQSED GPKPSNQEGKSPARFQFTEE DLHFVLYGVTPSLHHPASLH HAISGLLVPPDSSGSDSLP
Specificity	Recombinant fusion protein containing a sequence corresponding to amino acids 1-260 of human PRDM14 (NP_078780.1).

### ADDITIONAL INFORMATION

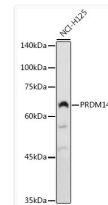
Note **STRICTLY FOR FURTHER SCIENTIFIC RESEARCH USE ONLY (RUO). MUST NOT TO BE USED IN DIAGNOSTIC OR THERAPEUTIC APPLICATIONS.**



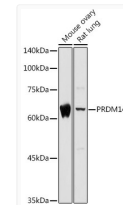
Chromatin immunoprecipitation analysis of RUNX1 gene from 293 cell line, using PRDM14 antibody (STJ27532) and rabbit IgG. P1, P2, P3 and P4 were four probes located on RUNX1 gene as the schematic diagram illustrated. The amount of immunoprecipitated DNA was checked by quantitative PCR. Histogram was constructed by the ratios of the immunoprecipitated DNA to the input.



Immunohistochemistry analysis of PRDM14 in paraffin-embedded rat testis using PRDM14 Rabbit polyclonal antibody (STJ27532) at dilution of 1:100 (40x lens). Perform high pressure antigen retrieval with 10 mM citrate buffer pH 6.0 before commencing with immunohistochemistry staining protocol.



Western blot analysis of lysates from NCI-H125 cells, using PRDM14 Rabbit polyclonal antibody (STJ27532) at 1:1000 dilution. Secondary antibody: HRP Goat Anti-Rabbit IgG (H+L) (STJS000856) at 1:10000 dilution. Lysates/proteins: 25 Mu g per lane. Blocking buffer: 3% nonfat dry milk in TBST. Detection: ECL Basic Kit. Exposure time: 90s.



Western blot analysis of various lysates using PRDM14 Rabbit polyclonal antibody (STJ27532) at 1:1000 dilution. Secondary antibody: HRP Goat Anti-Rabbit IgG (H+L) (STJS000856) at 1:10000 dilution. Lysates/proteins: 25 Mu g per lane. Blocking buffer: 3% nonfat dry milk in TBST. Detection: ECL Basic Kit. Exposure time: 5s.