

Anti-CALCA antibody (49-128) (STJ27531)

GENERAL INFORMATION

Product Type	Primary antibodies
Applications	WB/IHC-P/IF/ICC/ELISA
Host / Source	Rabbit
Reactivity	Human/Mouse/Rat

PRODUCT PROPERTIES

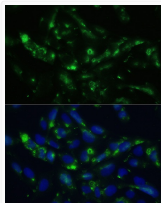
Clonality	Polyclonal
Concentration	Lot specific
Conjugation	Unconjugated
Purification	Affinity purification
Dilution Range	WB:1:1000-1:5000 IHC-P:1:2000-1:7000 IF/ICC:1:50-1:200 ELISA:Recommended starting concentration is 1 μ g/mL. Please optimize the concentration based on your specific assay requirements.
Formulation	PBS with 0.09% Sodium Azide, 50% Glycerol, pH7.3.
Isotype	IgG
Molecular Weight	Protein Mw: 13kDa/15kDa Observed Mw: 14kDa
Storage Instruction	Store at -20°C for up to 1 year from the date of receipt, and avoid repeat freeze-thaw cycles.

TARGET INFORMATION

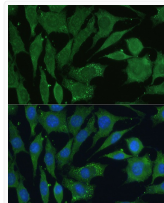
Gene ID	796 796
Gene Symbol	CALCA CALCA
UniProt ID	CALC_HUMAN CALCA_HUMAN
Immunogen Region	49-128
Immunogen Sequence	LLLAALVQDYVQMKASELEQ EQEREGRSRIIAQKRACDTAT CVTHRLAGLLSRSGGVVKNN FVPTNVGSKAFGRRRRLQA
Specificity	A synthetic peptide corresponding to a sequence within amino acids 49-128 of human CGRP (NP_001029125.1).

ADDITIONAL INFORMATION

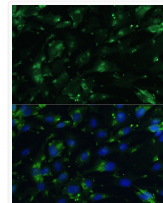
Note STRICTLY FOR FURTHER SCIENTIFIC RESEARCH USE ONLY (RUO). MUST NOT TO BE USED IN DIAGNOSTIC OR THERAPEUTIC APPLICATIONS.



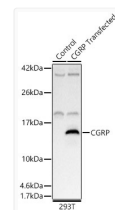
Immunofluorescence analysis of U2OS cells using CGRP Rabbit polyclonal antibody (STJ27531) at dilution of 1:100. Blue: DAPI for nuclear staining.



Immunofluorescence analysis of L929 cells using CGRP Rabbit polyclonal antibody (STJ27531) at dilution of 1:100. Blue: DAPI for nuclear staining.



Immunofluorescence analysis of C6 cells using CGRP Rabbit polyclonal antibody (STJ27531) at dilution of 1:100. Blue: DAPI for nuclear staining.



Western blot analysis of lysates from wild type (WT) and 293T cells transfected with CGRP using CGRP Rabbit polyclonal antibody (STJ27531) at 1:2000 dilution. Secondary antibody: HRP Goat Anti-Rabbit IgG (H+L) (STJS000856) at 1:10000 dilution. Lysates/proteins: 25 μ g per lane. Blocking buffer: 3% nonfat dry milk in TBST. Detection: ECL Basic Kit. Exposure time: 1s.