

## Anti-Phospho-STAT3-Y705 antibody (STJ27511)

### GENERAL INFORMATION

Product Type	Primary antibodies
Applications	WB/IHC-P/ELISA
Host / Source	Rabbit
Reactivity	Human/Mouse/Rat

### PRODUCT PROPERTIES

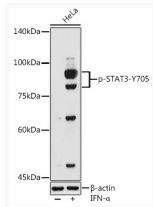
Clonality	Polyclonal
Concentration	Lot specific
Conjugation	Unconjugated
Purification	Affinity purification
Dilution Range	WB:1:100-1:500 IHC-P:1:500-1:1000 ELISA:Recommended starting concentration is 1 Mu g/mL. Please optimize the concentration based on your specific assay requirements.
Formulation	PBS with 0.09% Sodium Azide, 50% Glycerol, pH7.3.
Isotype	IgG
Molecular Weight	Protein Mw: 88kDa Observed Mw: 79kDa/86kDa
Storage Instruction	Store at -20°C for up to 1 year from the date of receipt, and avoid repeat freeze-thaw cycles.

### TARGET INFORMATION

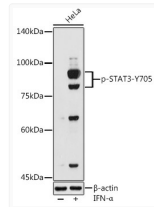
Gene ID	<a href="#">6774</a>
Gene Symbol	<a href="#">STAT3</a>
UniProt ID	<a href="#">STAT3_HUMAN</a>
Immunogen Sequence	APYLK
Specificity	A synthetic phosphorylated peptide around Y705 of human Phospho-STAT3-Y705 (NP_644805.1).

### ADDITIONAL INFORMATION

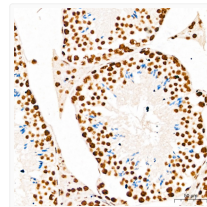
Note STRICTLY FOR FURTHER SCIENTIFIC RESEARCH USE ONLY (RUO). MUST NOT TO BE USED IN DIAGNOSTIC OR THERAPEUTIC APPLICATIONS.



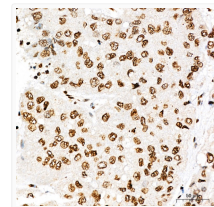
Western blot analysis of lysates from HeLa cells, using Phospho-STAT3-Y705 Rabbit pAb (STJ27511) at 1:500 dilution. HeLa cells were treated by IFN-Alpha (100 ng/ml) at 37 °C for 30 minutes after serum-starvation overnight. Secondary antibody: HRP-conjugated Goat anti-Rabbit IgG (H+L) (STJS000856) at 1:10000 dilution. Lysates/proteins: 25 Mu g per lane. Blocking buffer: 3% nonfat dry milk in TBST. Detection: ECL Basic Kit Exposure time: 180s.



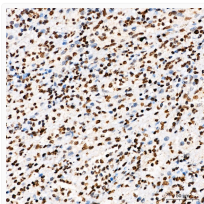
Western blot analysis of lysates from HeLa cells, using Phospho-STAT3-Y705 Rabbit pAb (STJ27511) at 1:500 dilution. HeLa cells were treated by IFN- $\alpha$  (100 ng/ml) at 37C for 30 minutes after serum-starvation overnight. Secondary antibody: HRP-conjugated Goat anti-Rabbit IgG (H+L) (STJS000856) at 1:10000 dilution. Lysates/proteins: 25 Mu g per lane. Blocking buffer: 3% nonfat dry milk in TBST. Detection: ECL Basic Kit Exposure time: 180s.



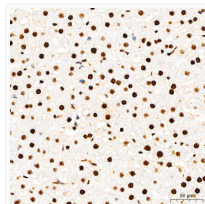
Immunohistochemistry analysis of paraffin-embedded Mouse testis tissue using Phospho-STAT3-Y705 Rabbit pAb (STJ27511) at a dilution of 1:1000 (40x lens). High pressure antigen retrieval performed with 0.01M Citrate Buffer (pH 6.0) prior to immunohistochemistry staining.



Immunohistochemistry analysis of paraffin-embedded Human liver cancer tissue using Phospho-STAT3-Y705 Rabbit pAb (STJ27511) at a dilution of 1:1000 (40x lens). High pressure antigen retrieval performed with 0.01M Citrate Buffer (pH 6.0) prior to immunohistochemistry staining.



Immunohistochemistry analysis of paraffin-embedded Human spleen tissue using Phospho-STAT3-Y705 Rabbit pAb (STJ27511) at a dilution of 1:1000 (40x lens). High pressure antigen retrieval performed with 0.01M Citrate Buffer (pH 6.0) prior to immunohistochemistry staining.



Immunohistochemistry analysis of paraffin-embedded Rat liver tissue using Phospho-STAT3-Y705 Rabbit pAb (STJ27511) at a dilution of 1:1000 (40x lens). High pressure antigen retrieval performed with 0.01M Citrate Buffer (pH 6.0) prior to immunohistochemistry staining.