

Anti-DNAJB1 antibody (1-340) (STJ27455)

GENERAL INFORMATION

Product Type	Primary antibodies
Applications	WB/IF/ICC/ELISA
Host / Source	Rabbit
Reactivity	Human/Mouse/Rat

PRODUCT PROPERTIES

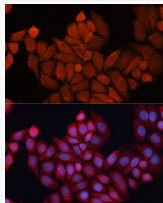
Clonality	Polyclonal
Concentration	Lot specific
Conjugation	Unconjugated
Purification	Affinity purification
Dilution Range	WB:1:500-1:2000 IF/CC:1:50-1:200 ELISA:Recommended starting concentration is 1 Mu g/mL. Please optimize the concentration based on your specific assay requirements.
Formulation	PBS with 0.02% Sodium Azide, 50% Glycerol, pH 7.3.
Isotype	IgG
Molecular Weight	Protein Mw: 38kDa Observed Mw: 38kDa/38kDa
Storage Instruction	Store at -20°C for up to 1 year from the date of receipt, and avoid repeat freeze-thaw cycles.

TARGET INFORMATION

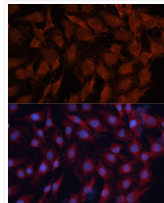
Gene ID	3337
Gene Symbol	DNAJB1
UniProt ID	DNJB1_HUMAN
Immunogen Region	1-340
Immunogen Sequence	MGKDYQTLGLARGASDEEI KRAYRRQALRYHPDKNKEPG AEEKFKEIAEAYDVLSDPRK REIFDRYGEEGLKSGSPGG SGGGANGTSFSYTFHGDPHA MFAEFFGGRNPFDTFFGQRN GEEGMIDDPLFSGFPMGMGG FTNVNFGRRSQAQEPARKKQ DPPVTHDLRVSLEEIYSGCT KMKKISHKRLNPDGKKSIRNE DKILTIEVKKGWKEGKTITF PKEGDQTSNNIPADIVFVL
Specificity	Recombinant fusion protein containing a sequence corresponding to amino acids 1-340 of human DNAJB1 (NP_006136.1).

ADDITIONAL INFORMATION

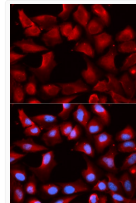
Note STRICTLY FOR FURTHER SCIENTIFIC RESEARCH USE ONLY (RUO). MUST NOT TO BE USED IN DIAGNOSTIC OR THERAPEUTIC APPLICATIONS.



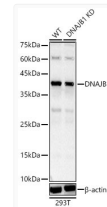
Immunofluorescence analysis of HeLa cells using [KO Validated] DNAJB1 Rabbit polyclonal antibody (STJ27455) at dilution of 1:100. Secondary antibody: Cy3 Goat Anti-Rabbit IgG (H+L) at 1:500 dilution. Blue: DAPI for nuclear staining.



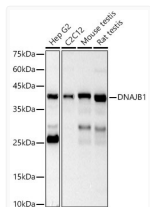
Immunofluorescence analysis of C6 cells using [KO Validated] DNAJB1 Rabbit polyclonal antibody (STJ27455) at dilution of 1:100. Secondary antibody: Cy3 Goat Anti-Rabbit IgG (H+L) at 1:500 dilution. Blue: DAPI for nuclear staining.



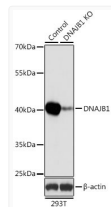
Immunofluorescence analysis of U2OS cells using [KO Validated] DNAJB1 Rabbit polyclonal antibody (STJ27455). Secondary antibody: Cy3 Goat Anti-Rabbit IgG (H+L) at 1:500 dilution. Blue: DAPI for nuclear staining.



Western blot analysis of lysates from 293T cells using [KO Validated] DNAJB1 Rabbit polyclonal antibody (STJ27455) at 1:1000 dilution. Secondary antibody: HRP Goat Anti-Rabbit IgG (H+L) (STJS000856) at 1:10000 dilution. Lysates/proteins: 25 Mu g per lane. Blocking buffer: 3% nonfat dry milk in TBST. Detection: ECL Basic Kit. Exposure time: 30s.



Western blot analysis of various lysates using [KO Validated] DNAJB1 Rabbit polyclonal antibody (STJ27455) at 1:1000 dilution. Secondary antibody: HRP Goat Anti-Rabbit IgG (H+L) (STJS000856) at 1:10000 dilution. Lysates/proteins: 25 Mu g per lane. Blocking buffer: 3% nonfat dry milk in TBST. Detection: ECL Basic Kit. Exposure time: 30s.



Western blot analysis of lysates from wild type (WT) and DNAJB1 knockout (KO) 293T cells, using [KO Validated] DNAJB1 Rabbit polyclonal antibody (STJ27455) at 1:1000 dilution. Secondary antibody: HRP Goat Anti-Rabbit IgG (H+L) (STJS000856) at 1:10000 dilution. Lysates/proteins: 25 Mu g per lane. Blocking buffer: 3% nonfat dry milk in TBST. Detection: ECL Basic Kit. Exposure time: 1s.