

Anti-PPP2R5C antibody (1-320) (STJ27433)

GENERAL INFORMATION

Product Type	Primary antibodies
Applications	WB/ELISA
Host / Source	Rabbit
Reactivity	Human/Mouse/Rat

PRODUCT PROPERTIES

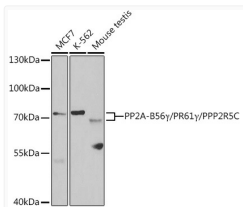
Clonality	Polyclonal
Concentration	Lot specific
Conjugation	Unconjugated
Purification	Affinity purification
Dilution Range	WB:1:500-1:2000 ELISA:Recommended starting concentration is 1 µg/mL. Please optimize the concentration based on your specific assay requirements.
Formulation	PBS with 0.02% Sodium Azide, 50% Glycerol, pH 7.3.
Isotype	IgG
Molecular Weight	Protein Mw: 61kDa Observed Mw: 68-71kDa
Storage Instruction	Store at -20°C for up to 1 year from the date of receipt, and avoid repeat freeze-thaw cycles.

TARGET INFORMATION

Gene ID	5527
Gene Symbol	PPP2R5C
UniProt ID	2A5G_HUMAN
Immunogen Region	1-320
Immunogen Sequence	MLTCNKAGSRMVVDAANSNG PFQPVLLHIRDVPPADQEK LFIQKLRQCCVLFDFVSDPL SDLKWKKEVKRAALSEMVEYI THNRNVITEPIYPEVVMFA VNMFRLLPPSSNPTGAEFDP EEDEPTLEAAWPHLQLVYEF FLRFLESPDFQPNIAKKYID QKFVLLQLELFDSEDPREPRD FLKTTLHRIYGKFLGLRAYI RQIINNIFYRFIYETEHHNG IAELLEILGSIINGFALPL
Specificity	Recombinant fusion protein containing a sequence corresponding to amino acids 1-320 of human PP2A-B56 Gamma/PR61 Gamma/PP2A-B56 Gamma/PR61 Gamma/PPP2R5C (NP_848702.1).

ADDITIONAL INFORMATION

Note STRICTLY FOR FURTHER SCIENTIFIC RESEARCH USE ONLY (RUO). MUST NOT TO BE USED IN DIAGNOSTIC OR THERAPEUTIC APPLICATIONS.



Western blot analysis of extracts of various cell lines, using PP2A-B56 Gamma/PR61 Gamma/PP2A-B56 Gamma/PR61 Gamma/PPP2R5C antibody (STJ27433) at 1:1000 dilution. Secondary antibody: HRP Goat Anti-Rabbit IgG (H+L) (STJS000856) at 1:10000 dilution. Lysates/proteins: 25 µg per lane. Blocking buffer: 3% nonfat dry milk in TBST. Detection: ECL Basic Kit. Exposure time: 30s.