

Anti-PLA2G1B antibody (23-148) (STJ27431)

GENERAL INFORMATION

Product Type	Primary antibodies
Applications	WB/IHC-P/ELISA
Host / Source	Rabbit
Reactivity	Human/Mouse

PRODUCT PROPERTIES

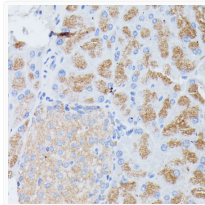
Clonality	Polyclonal
Concentration	Lot specific
Conjugation	Unconjugated
Purification	Affinity purification
Dilution Range	WB:1:500-1:2000 IHC-P:1:100-1:200 ELISA:Recommended starting concentration is 1 Mu g/mL. Please optimize the concentration based on your specific assay requirements.
Formulation	PBS with 0.01% Thimerosal, 50% Glycerol, pH 7.3.
Isotype	IgG
Molecular Weight	Protein Mw: 16kDa Observed Mw: 16kDa
Storage Instruction	Store at -20°C for up to 1 year from the date of receipt, and avoid repeat freeze-thaw cycles.

TARGET INFORMATION

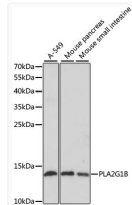
Gene ID	5319
Gene Symbol	PLA2G1B
UniProt ID	PA21B_HUMAN
Immunogen Region	23-148
Immunogen Sequence	AVWQFRKMIKCVIPGSDPFL EYNNYGCYCGLGSGTVPVE LDKCCQTHDNCYDQAKKLDSCFKFLLDNPYHTHTYSYSCSGS AITCSSKNKECEAFICNCDR NAAICFSKAPYNKAHKNLDT KKYCQS
Specificity	Recombinant fusion protein containing a sequence corresponding to amino acids 23-148 of human PLA2G1B (NP_000919.1).

ADDITIONAL INFORMATION

Note STRICTLY FOR FURTHER SCIENTIFIC RESEARCH USE ONLY (RUO). MUST NOT TO BE USED IN DIAGNOSTIC OR THERAPEUTIC APPLICATIONS.



Immunohistochemistry analysis of PLA2G1B in paraffin-embedded mouse pancreas using PLA2G1B Rabbit polyclonal antibody (STJ27431) at dilution of 1:100 (40x lens). Perform microwave antigen retrieval with 10 mM PBS buffer pH 7.2 before commencing with immunohistochemistry staining protocol.



Western blot analysis of various lysates using PLA2G1B Rabbit polyclonal antibody (STJ27431) at 1:1000 dilution. Secondary antibody: HRP Goat Anti-Rabbit IgG (H+L) (STJS000856) at 1:10000 dilution. Lysates/proteins: 25 Mu g per lane. Blocking buffer: 3% nonfat dry milk in TBST. Detection: ECL Enhanced Kit. Exposure time: 90s.