

Anti-PEX19 antibody (1-299) (STJ27429)

GENERAL INFORMATION

Product Type	Primary antibodies
Applications	WB/IF/ICC/ELISA
Host / Source	Rabbit
Reactivity	Human/Mouse/Rat

PRODUCT PROPERTIES

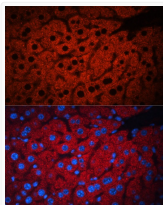
Clonality	Polyclonal
Concentration	Lot specific
Conjugation	Unconjugated
Purification	Affinity purification
Dilution Range	WB:1:500-1:2000 IF/CC:1:50-1:200 ELISA:Recommended starting concentration is 1 Mu g/mL. Please optimize the concentration based on your specific assay requirements.
Formulation	PBS with 0.02% Sodium Azide, 50% Glycerol, pH 7.3.
Isotype	IgG
Molecular Weight	Protein Mw: 33kDa Observed Mw: 37kDa
Storage Instruction	Store at -20°C for up to 1 year from the date of receipt, and avoid repeat freeze-thaw cycles.

TARGET INFORMATION

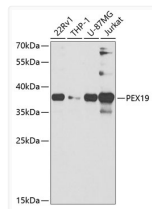
Gene ID	5824
Gene Symbol	PEX19
UniProt ID	PEX19_HUMAN
Immunogen Region	1-299
Immunogen Sequence	MAAAEEGCSVGAADRELEE LLESALDDFDKAKPSPAPPS TTTAPDASGPQKRSPGDTAK DALFASQEKFFQELFDSELA SQATAEFKAMKELAE EEPH LVEQFQKLEAAGR VGS DMT SQQEFTSCLKETLSGLAKNA TDLQNSSMSEEELTKAMEGL GMDEGDGEGNLPIMQSIMQ NLLSKDVLVPSLKEITEKYP EWLQSHRESLPPEQFEKYQE QHSVMCKICEQFEAETPTD
Specificity	Recombinant fusion protein containing a sequence corresponding to amino acids 1-299 of human PEX19 (NP_002848.1).

ADDITIONAL INFORMATION

Note STRICTLY FOR FURTHER SCIENTIFIC RESEARCH USE ONLY (RUO). MUST NOT TO BE USED IN DIAGNOSTIC OR THERAPEUTIC APPLICATIONS.



Immunofluorescence analysis of mouse liver using PEX19 antibody (STJ27429) at dilution of 1:100. Blue: DAPI for nuclear staining.



Western blot analysis of extracts of various cell lines, using PEX19 antibody (STJ27429) at 1:1000 dilution. Secondary antibody: HRP Goat Anti-Rabbit IgG (H+L) (STJS000856) at 1:10000 dilution. Lysates/proteins: 25 Mu g per lane. Blocking buffer: 3% nonfat dry milk in TBST. Detection: ECL Basic Kit. Exposure time: 90s.