

Anti-MAGEA1 antibody (1-309) (STJ27423)

GENERAL INFORMATION

Product Type	Primary antibodies
Applications	WB/IHC-P/IF/ICC/ELISA
Host / Source	Rabbit
Reactivity	Human

PRODUCT PROPERTIES

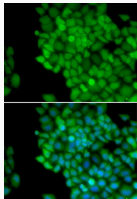
Clonality	Polyclonal
Concentration	Lot specific
Conjugation	Unconjugated
Purification	Affinity purification
Dilution Range	WB:1:500-1:2000 IHC-P:1:50-1:200 IF/CC:1:50-1:100 ELISA:Recommended starting concentration is 1 Mu g/mL. Please optimize the concentration based on your specific assay requirements.
Formulation	PBS with 0.02% Sodium Azide, 50% Glycerol, pH 7.3.
Isotype	IgG
Molecular Weight	Protein Mw: 34kDa Observed Mw: 45kDa
Storage Instruction	Store at -20°C for up to 1 year from the date of receipt, and avoid repeat freeze-thaw cycles.

TARGET INFORMATION

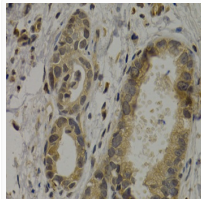
Gene ID	4100
Gene Symbol	MAGEA1
UniProt ID	MAGA1_HUMAN
Immunogen Region	1-309
Immunogen Sequence	MSLEQRSLHCKPEEALAAQK EALGLVCVQAATSSSSPLVL GTLEEVPTAGSTDPQPSPQG ASAFPTTINFTRQRQPSEGS SSREEEGPSTSCILESLFRA VITKKVADLVGFLLLKYRAR EPVTKAEMLESVIKINYKHC F PEIFGKASESLQLVFGIDVK EADPTGHSYLVLTCLGLSYD GLLGDNQIMPKTGFLIIVLV MIAMEGGHAPEEEIWEELSV MEVYDGREHSAYGEPKLL
Specificity	Recombinant fusion protein containing a sequence corresponding to amino acids 1-309 of human MAGE-1/MAGE1A (NP_004979.3).

ADDITIONAL INFORMATION

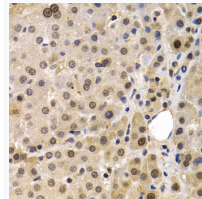
Note STRICTLY FOR FURTHER SCIENTIFIC RESEARCH USE ONLY (RUO). MUST NOT TO BE USED IN DIAGNOSTIC OR THERAPEUTIC APPLICATIONS.



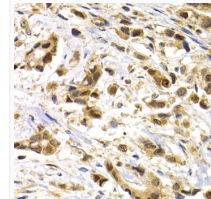
Immunofluorescence analysis of HeLa cells using MAGE-1/MAGE1A antibody (STJ27423). Blue: DAPI for nuclear staining.



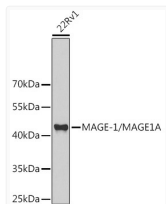
Immunohistochemistry analysis of paraffin-embedded human stomach cancer using MAGE-1/MAGE1A antibody (STJ27423) at dilution of 1:200 (40x lens). Perform microwave antigen retrieval with 10 mM PBS buffer pH 7. 2 before commencing with immunohistochemistry staining protocol.



Immunohistochemistry analysis of paraffin-embedded human liver cancer using MAGE-1/MAGE1A antibody (STJ27423) at dilution of 1:200 (40x lens). Perform microwave antigen retrieval with 10 mM PBS buffer pH 7. 2 before commencing with immunohistochemistry staining protocol.



Immunohistochemistry analysis of paraffin-embedded human breast cancer using MAGE-1/MAGE1A antibody (STJ27423) at dilution of 1:200 (40x lens). Perform microwave antigen retrieval with 10 mM PBS buffer pH 7. 2 before commencing with immunohistochemistry staining protocol.



Western blot analysis of extracts of 22Rv1 cells, using MAGE-1/MAGE1A antibody (STJ27423) at 1:1000 dilution. Secondary antibody: HRP Goat Anti-Rabbit IgG (H+L) (STJS000856) at 1:10000 dilution. Lysates/proteins: 25 Mu g per lane. Blocking buffer: 3% nonfat dry milk in TBST. Detection: ECL Basic Kit. Exposure time: 30s.