

## Anti-HDC antibody (453-662) (STJ27418)

### GENERAL INFORMATION

Product Type	Primary antibodies
Applications	WB/ELISA
Host / Source	Rabbit
Reactivity	Human/Mouse

### PRODUCT PROPERTIES

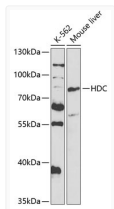
Clonality	Polyclonal
Concentration	Lot specific
Conjugation	Unconjugated
Purification	Affinity purification
Dilution Range	WB:1:500-1:2000 ELISA:Recommended starting concentration is 1 Mu g/mL. Please optimize the concentration based on your specific assay requirements.
Formulation	PBS with 0.02% Sodium Azide, 50% Glycerol, pH 7.3.
Isotype	IgG
Molecular Weight	Protein Mw: 74kDa Observed Mw: 85kDa
Storage Instruction	Store at -20°C for up to 1 year from the date of receipt, and avoid repeat freeze-thaw cycles.

### TARGET INFORMATION

Gene ID	<a href="#">3067</a>
Gene Symbol	<a href="#">HDC</a>
UniProt ID	<a href="#">DCHS_HUMAN</a>
Immunogen Region	453-662
Immunogen Sequence	QFTTRDDILRDWNLIRDAAT LILSQHCTSQPSPRVGNLIS QIRGARAWACGTSLQSVSGA GDDPVQARKIHKPQRVAG PMKRENGLHLETLDPVDDC FSEEAPDATKHKLSSFLFSY LSVQTKKKTIVRSLSCNSVPV SAQKPLPTEASVKNGGSSRV RIFSRFPEDMMMLKKSFAFK LIKFYSPVSPFPECSSQCGLQ LPCCPLQAMV
Specificity	Recombinant fusion protein containing a sequence corresponding to amino acids 453-662 of human HDC (NP_002103.2).

### ADDITIONAL INFORMATION

Note **STRICTLY FOR FURTHER SCIENTIFIC RESEARCH USE ONLY (RUO). MUST NOT TO BE USED IN DIAGNOSTIC OR THERAPEUTIC APPLICATIONS.**



Western blot analysis of extracts of various cell lines, using HDC antibody (STJ27418) at 1:1000 dilution. Secondary antibody: HRP Goat Anti-Rabbit IgG (H+L) (STJS000856) at 1:10000 dilution. Lysates/proteins: 25 Mu g per lane. Blocking buffer: 3% nonfat dry milk in TBST. Detection: ECL Basic Kit. Exposure time: 90s.