

Anti-PSMB10 antibody (1-273) (STJ27405)

GENERAL INFORMATION

Product Type	Primary antibodies
Applications	WB/IHC-P/IF/ICC/ELISA
Host / Source	Rabbit
Reactivity	Human/Mouse/Rat

PRODUCT PROPERTIES

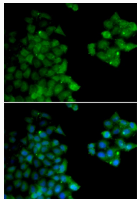
Clonality	Polyclonal
Concentration	Lot specific
Conjugation	Unconjugated
Purification	Affinity purification
Dilution Range	WB:1:500-1:2000 IHC-P:1:50-1:200 IF/CC:1:50-1:100 ELISA:Recommended starting concentration is 1 μ g/mL. Please optimize the concentration based on your specific assay requirements.
Formulation	PBS with 0.01% Thimerosal, 50% Glycerol, pH 7.3.
Isotype	IgG
Molecular Weight	Protein Mw: 29kDa Observed Mw: 29kDa
Storage Instruction	Store at -20°C for up to 1 year from the date of receipt, and avoid repeat freeze-thaw cycles.

TARGET INFORMATION

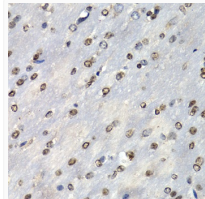
Gene ID	5699
Gene Symbol	PSMB10
UniProt ID	PSB10_HUMAN
Immunogen Region	1-273
Immunogen Sequence	MLKPALEPRGGFSFENCQRN ASLERVLPGLKVPHARKTGT TIAGLVFQDGVILGADTRAT NDSVVADKSCKEKIHFIAPKI YCCGAGVAADAEMTTRMVAS KMELHALSTGREPRVATVTR ILRQTLFRYQGHV GASLIVG GVDLTGTPQLYGVHPHGSYSR LPFTALGSGGQDAALAVLEDR FQPNMTLEAAQGLLVEAVTA GILGDLGSGGNVDACVITKT GAKLLRTLSSPTPEVKRSG
Specificity	Recombinant fusion protein containing a sequence corresponding to amino acids 1-273 of human PSMB10 (NP_002792.1).

ADDITIONAL INFORMATION

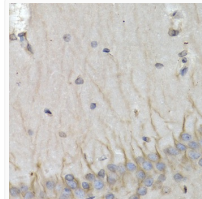
Note **STRICTLY FOR FURTHER SCIENTIFIC RESEARCH USE ONLY (RUO). MUST NOT TO BE USED IN DIAGNOSTIC OR THERAPEUTIC APPLICATIONS.**



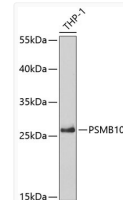
Immunofluorescence analysis of HeLa cells using PSMB10 Rabbit polyclonal antibody (STJ27405). Secondary antibody: Cy3 Goat Anti-Rabbit IgG (H+L) at 1:500 dilution. Blue: DAPI for nuclear staining.



Immunohistochemistry analysis of PSMB10 in paraffin-embedded mouse brain using PSMB10 Rabbit polyclonal antibody (STJ27405) at dilution of 1:200 (40x lens). Perform microwave antigen retrieval with 10 mM PBS buffer pH 7.2 before commencing with immunohistochemistry staining protocol.



Immunohistochemistry analysis of PSMB10 in paraffin-embedded rat brain using PSMB10 Rabbit polyclonal antibody (STJ27405) at dilution of 1:200 (40x lens). Perform microwave antigen retrieval with 10 mM PBS buffer pH 7.2 before commencing with immunohistochemistry staining protocol.



Western blot analysis of lysates from THP-1 cells, using PSMB10 Rabbit polyclonal antibody (STJ27405) at 1:5000 dilution. Secondary antibody: HRP Goat Anti-Rabbit IgG (H+L) (STJS000856) at 1:10000 dilution. Lysates/proteins: 25 μ g per lane. Blocking buffer: 3% nonfat dry milk in TBST. Detection: ECL Basic Kit. Exposure time: 60s.