

Anti-STXBP1 antibody (295-594) (STJ27373)

GENERAL INFORMATION

Product Type	Primary antibodies
Applications	IF/ICC/ELISA
Host / Source	Rabbit
Reactivity	Human/Rat

PRODUCT PROPERTIES

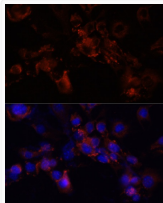
Clonality	Polyclonal
Concentration	Lot specific
Conjugation	Unconjugated
Purification	Affinity purification
Dilution Range	IF/ICC:1:50-1:200 ELISA:Recommended starting concentration is 1 μ g/mL. Please optimize the concentration based on your specific assay requirements.
Formulation	PBS with 0.02% Sodium Azide, 50% Glycerol, pH 7.3.
Isotype	IgG
Molecular Weight	Protein Mw: 68kDa Observed Mw: Refer to figures
Storage Instruction	Store at -20°C for up to 1 year from the date of receipt, and avoid repeat freeze-thaw cycles.

TARGET INFORMATION

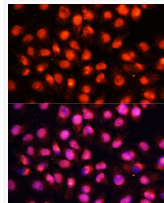
Gene ID	6812
Gene Symbol	STXBP1
UniProt ID	STXB1_HUMAN
Immunogen Region	295-594
Immunogen Sequence	HIAEVSQEVTRSLKDFSSSK RMNTGEKTTMRDLSQMLKKM PQYQKELSKYSTHLHLAEDC MKHYQGTVDKLCRVEQDLAM GTDAEGEKIKDPMRAIVPIL LDANVSTYDKIRIILLYIFL KNGITEENLNKLIQHAQIPP EDSEIITNMAHLGVPIVTDTS TLRRRSKPERKERISEQTYQ LSRWTPIIKDIMEDTIEDKL DTKHYPYISTRSSASFSTTA VSARYGHWHKNKAPGEYRS
Specificity	Recombinant fusion protein containing a sequence corresponding to amino acids 295-594 of human STXBP1 (NP_001027392.1).

ADDITIONAL INFORMATION

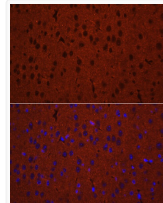
Note STRICTLY FOR FURTHER SCIENTIFIC RESEARCH USE ONLY (RUO). MUST NOT TO BE USED IN DIAGNOSTIC OR THERAPEUTIC APPLICATIONS.



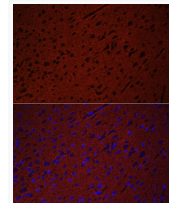
Immunofluorescence analysis of NIH/3T3 cells using STXBP1 antibody (STJ27373) at dilution of 1:100 (40x lens). Blue: DAPI for nuclear staining.



Immunofluorescence analysis of HeLa cells using STXBP1 antibody (STJ27373) at dilution of 1:100 (40x lens). Blue: DAPI for nuclear staining.



Immunofluorescence analysis of mouse brain using STXBP1 antibody (STJ27373) at dilution of 1:50. Blue: DAPI for nuclear staining.



Immunofluorescence analysis of rat brain using STXBP1 antibody (STJ27373) at dilution of 1:50. Blue: DAPI for nuclear staining.