

Anti-C7 antibody (22-270) (STJ27347)

GENERAL INFORMATION

Product Type	Primary antibodies
Applications	WB/IF/ICC/ELISA
Host / Source	Rabbit
Reactivity	Human/Mouse/Rat

PRODUCT PROPERTIES

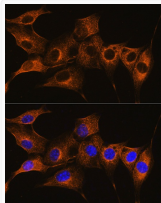
Clonality	Polyclonal
Concentration	Lot specific
Conjugation	Unconjugated
Purification	Affinity purification
Dilution Range	WB:1:500-1:1000 IF/CC:1:50-1:200 ELISA:Recommended starting concentration is 1 Mu g/mL. Please optimize the concentration based on your specific assay requirements.
Formulation	PBS with 0.05% Proclin300, 50% Glycerol, pH7.3.
Isotype	IgG
Molecular Weight	Protein Mw: 94kDa Observed Mw: 100-105kDa
Storage Instruction	Store at -20°C for up to 1 year from the date of receipt, and avoid repeat freeze-thaw cycles.

TARGET INFORMATION

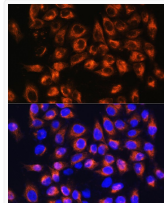
Gene ID	730
Gene Symbol	C7
UniProt ID	CO7_HUMAN
Immunogen Region	22-270
Immunogen Sequence	ASSPVNQCQWDFYAPWSECNG CTKTQTRRRSVAVYGGYGGQ PCVGNAFETQSCPEPTRGCPTEEGGERFRFCFSGQCISKSL VCNGLSDCDEDSADEDRCED SERRPSCDIDKPPPIELTGNGYNELTGQFRNRVINTKSF GGQCRKVFSGDGKDFYRLSG NVLSYTFQVKINNDNFNYEFYNSTWSYVKHTSTEHTSSSRK RSFFRSSSSSSRSYTSHTNE IHKGSYQLLVVENTVEVA
Specificity	A synthetic peptide corresponding to a sequence within amino acids 22-270 of human C7 (NP_000578.2).

ADDITIONAL INFORMATION

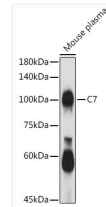
Note **STRICTLY FOR FURTHER SCIENTIFIC RESEARCH USE ONLY (RUO). MUST NOT TO BE USED IN DIAGNOSTIC OR THERAPEUTIC APPLICATIONS.**



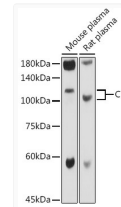
Immunofluorescence analysis of NIH/3T3 cells using C7 Rabbit polyclonal antibody (STJ27347) at dilution of 1:100. Blue: DAPI for nuclear staining.



Immunofluorescence analysis of HeLa cells using C7 Rabbit polyclonal antibody (STJ27347) at dilution of 1:100. Blue: DAPI for nuclear staining.



Western blot analysis of extracts of Mouse plasma, using C7 antibody (STJ27347) at 1:1000 dilution. Secondary antibody: HRP Goat Anti-Rabbit IgG (H+L) (STJS000856) at 1:10000 dilution. Lysates/proteins: 25 Mu g per lane. Blocking buffer: 3% nonfat dry milk in TBST. Detection: ECL Basic Kit. Exposure time: 180s.



Western blot analysis of extracts of various cell lines, using C7 antibody (STJ27347) at 1:1000 dilution. Secondary antibody: HRP Goat Anti-Rabbit IgG (H+L) (STJS000856) at 1:10000 dilution. Lysates/proteins: 25 Mu g per lane. Blocking buffer: 3% nonfat dry milk in TBST. Detection: ECL Basic Kit. Exposure time: 1s.