

Anti-ANXA6 antibody (1-250) (STJ27343)

GENERAL INFORMATION

Product Type	Primary antibodies
Applications	WB/ELISA
Host / Source	Rabbit
Reactivity	Human/Mouse/Rat

PRODUCT PROPERTIES

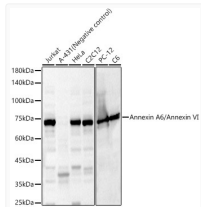
Clonality	Polyclonal
Concentration	Lot specific
Conjugation	Unconjugated
Purification	Affinity purification
Dilution Range	WB:1:2000-1:7000 ELISA:Recommended starting concentration is 1 Mu g/mL. Please optimize the concentration based on your specific assay requirements.
Formulation	PBS with 0.02% Sodium Azide, 50% Glycerol, pH 7.3.
Isotype	IgG
Molecular Weight	Protein Mw: 76kDa Observed Mw: 72kDa
Storage Instruction	Store at -20°C for up to 1 year from the date of receipt, and avoid repeat freeze-thaw cycles.

TARGET INFORMATION

Gene ID	309
Gene Symbol	ANXA6
UniProt ID	ANXA6_HUMAN
Immunogen Region	1-250
Immunogen Sequence	MAKPAQGAKYRGSIHDFPGF DPNQDAEALYTAMKGFSGSDK EALDIITSRSNRQRQVEVCQ SYKSLYGKDLIADLKYELTG KFERLIVGLMRPPAYCDAKE IKDAISGIGTDEKCLIEILA SRTNEQMHQLVAAYKDAYER DLEADIIGDTSGHFQKMLVV LLQGTREEDDVVSEDLVQQD VQDLYEAGELKWGTDEAQFI YILGNRSKQHLRLVFDEYLK TTGKPIEASIRGELSGDFE
Specificity	Recombinant fusion protein containing a sequence corresponding to amino acids 1-250 of human Annexin A6/Annexin VI (NP_001146.2).

ADDITIONAL INFORMATION

Note STRICTLY FOR FURTHER SCIENTIFIC RESEARCH USE ONLY (RUO). MUST NOT TO BE USED IN DIAGNOSTIC OR THERAPEUTIC APPLICATIONS.



Western blot analysis of various lysates, using Annexin A6/Annexin VI Rabbit polyclonal antibody (STJ27343) at 1:6000 dilution. Secondary antibody: HRP Goat Anti-Rabbit IgG (H+L) (STJS00856) at 1:10000 dilution. Lysates/proteins: 25 Mu g per lane. Blocking buffer: 3% nontat dry milk in TBST. Detection: ECL Basic Kit. Exposure time: 30s.