

Anti-EED antibody (1-400) (STJ27324)

GENERAL INFORMATION

Product Type	Primary antibodies
Applications	WB/IF/ICC/IP/ELISA
Host / Source	Rabbit
Reactivity	Human/Mouse/Rat

PRODUCT PROPERTIES

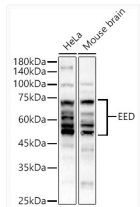
Clonality	Polyclonal
Concentration	Lot specific
Conjugation	Unconjugated
Purification	Affinity purification
Dilution Range	WB:1:500-1:2000 IF/CC:1:50-1:200 IP:0.5 Mu g-4 Mu g antibody for 200 Mu g-400 Mu g extracts of whole cells ELISA:Recommended starting concentration is 1 Mu g/mL. Please optimize the concentration based on your specific assay requirements
Formulation	PBS with 0.02% Sodium Azide, 50% Glycerol, pH 7.3.
Isotype	IgG
Molecular Weight	Protein Mw: 50kDa Observed Mw: 50-70kDa
Storage Instruction	Store at -20°C for up to 1 year from the date of receipt, and avoid repeat freeze-thaw cycles.

TARGET INFORMATION

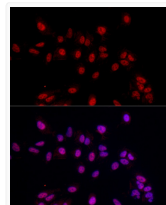
Gene ID	8726
Gene Symbol	EED
UniProt ID	EED_HUMAN
Immunogen Region	1-400
Immunogen Sequence	MSEREVSTAPAGTDMPAACK QKLSSDENSNPDLSGDENDD AVSIESGTINTERPDTPTNTP NAPGRKSWGKGGKWKSKKCKY SFKCVNSLKDHNQPLFGVQ FNWHSKEGDPPLVFATVGSNR VTLYECHSQGEIRLLQSYVD ADADENFYTCAWTYDSNTSH PLLAVAGSRGIIRINPITM QCIKHYYVGHGNAINELKFHP RDPNLLLSVSKDHALRLWNI QTDTLVAIFGGVEGHRDEV
Specificity	Recombinant fusion protein containing a sequence corresponding to amino acids 1-400 of human EED (NP_694536.1).

ADDITIONAL INFORMATION

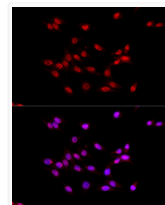
Note STRICTLY FOR FURTHER SCIENTIFIC RESEARCH USE ONLY (RUO). MUST NOT TO BE USED IN DIAGNOSTIC OR THERAPEUTIC APPLICATIONS.



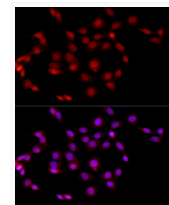
Western blot analysis of various lysates, using EED rabbit polyclonal antibody (STJ27324) at 1:500 dilution. Secondary antibody: HRP Goat Anti-rabbit IgG (H+L) (STJS000856) at 1:10000 dilution. Lysates/proteins: 25ug per lane. Blocking buffer: 3% non-fat dry milk in TBST. Detection: ECL Basic Kit. Exposure time: 180s.



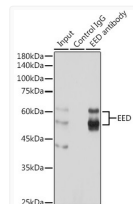
Immunofluorescence analysis of A-549 cells using EED rabbit polyclonal antibody (STJ27324) at dilution of 1:50 (40x lens). Blue: DAPI for nuclear staining.



Immunofluorescence analysis of C6 cells using EED rabbit polyclonal antibody (STJ27324) at dilution of 1:50 (40x lens). Blue: DAPI for nuclear staining.



Immunofluorescence analysis of NIH/3T3 cells using EED rabbit polyclonal antibody (STJ27324) at dilution of 1:50 (40x lens). Blue: DAPI for nuclear staining.



Immunoprecipitation analysis of 300 Mu g extracts of HeLa cells using 3 Mu g EED antibody (STJ27324). Western blot was performed from the immunoprecipitate using EED antibody (STJ27324) at a dilution of 1:1000.