

Anti-KLKB1 antibody (20-300) (STJ27271)

GENERAL INFORMATION

Product Type	Primary antibodies
Applications	WB/IHC-P/ELISA
Host / Source	Rabbit
Reactivity	Human/Mouse/Rat

PRODUCT PROPERTIES

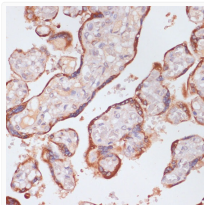
Clonality	Polyclonal
Concentration	Lot specific
Conjugation	Unconjugated
Purification	Affinity purification
Dilution Range	WB:1:500-1:1000 IHC-P:1:50-1:200 ELISA:Recommended starting concentration is 1 μ g/mL. Please optimize the concentration based on your specific assay requirements.
Formulation	PBS with 0.09% Sodium Azide, 50% Glycerol, pH 7.3.
Isotype	IgG
Molecular Weight	Protein Mw: 71kDa Observed Mw: 80kDa
Storage Instruction	Store at -20°C for up to 1 year from the date of receipt, and avoid repeat freeze-thaw cycles.

TARGET INFORMATION

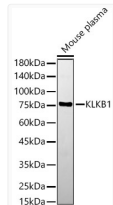
Gene ID	3818
Gene Symbol	KLKB1
UniProt ID	KLKB1_HUMAN
Immunogen Region	20-300
Immunogen Sequence	GCLTQLYENAFFRGGDVASM YTPNAQYQMRCTFHPRCLL FSFLPASSINDMEKRFGCFL KDSVTGTLPKVHRTGAVSGH SLKQCGHQISACHRDYKGV DMRGVNFNVSKVSSVEECQK RCTSNIRCQFFSYATQTFHK AEYRNNCLLKYSPPGGTPTAI KVLSNVESGFSLKPCALSEI GCHMNIQHLAFSDVDVARV LTPDAFVCRITICTYHPNCLF FTFYTNVWVKIESQRNVCLL
Specificity	Recombinant fusion protein containing a sequence corresponding to amino acids 20-300 of human KLKB1 (NP_000883.2).

ADDITIONAL INFORMATION

Note **STRICTLY FOR FURTHER SCIENTIFIC RESEARCH USE ONLY (RUO). MUST NOT TO BE USED IN DIAGNOSTIC OR THERAPEUTIC APPLICATIONS.**



Immunohistochemistry analysis of paraffin-embedded human placenta using KLKB1 antibody (STJ27271) at dilution of 1:100 (40x lens). Perform microwave antigen retrieval with 10 mM PBS buffer pH 7.2 before commencing with immunohistochemistry staining protocol.



Western blot analysis of Mouse plasma, using KLKB1 antibody (STJ27271) at 1:600 dilution. Secondary antibody: HRP Goat Anti-Rabbit IgG (H+L) (STJS00856) at 1:10000 dilution. Lysates/proteins: 25 μ g per lane. Blocking buffer: 3% nonfat dry milk in TBST. Detection: ECL Basic Kit. Exposure time: 120s.