

Anti-DYNC2L1 antibody (1-352) (STJ26842)

GENERAL INFORMATION

Product Type	Primary antibodies
Applications	WB/ELISA
Host / Source	Rabbit
Reactivity	Human/Mouse/Rat

PRODUCT PROPERTIES

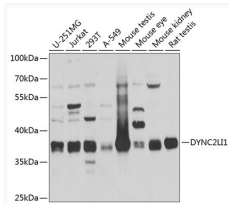
Clonality	Polyclonal
Concentration	Lot specific
Conjugation	Unconjugated
Purification	Affinity purification
Dilution Range	WB:1:500-1:2000 ELISA:Recommended starting concentration is 1 µg/mL. Please optimize the concentration based on your specific assay requirements.
Formulation	PBS with 0.02% Sodium Azide, 50% Glycerol, pH 7.3.
Isotype	IgG
Molecular Weight	Protein Mw: 40kDa Observed Mw: 38kDa
Storage Instruction	Store at -20°C for up to 1 year from the date of receipt, and avoid repeat freeze-thaw cycles.

TARGET INFORMATION

Gene ID	51626
Gene Symbol	DYNC2L1
UniProt ID	DC2L1_HUMAN
Immunogen Region	1-352
Immunogen Sequence	MPSETLWEIAKAEVEKRGIN GSEGDGAEIAEKVFFFIGSK NGGKTTIILRCLDRDEPPKP TLALEYTYGRRRAKGHNTPKD IAHFWEWGGSLLDLISIP ITGDTLRTFSLVVLVLDLSKP NDLWPTMENLLQATKSHVDK VIMKLGKTNAAVSEMRQKI WNNMPKDHPQDHELIDPFPV PLVIIGSKYDVFQDFESEKR KVICKTLRFVAHYYGASLMF TSKSEALLKIRGVINQLA
Specificity	Recombinant fusion protein containing a sequence corresponding to amino acids 1-352 of human DYNC2L1 (NP_001180393.1).

ADDITIONAL INFORMATION

Note **STRICTLY FOR FURTHER SCIENTIFIC RESEARCH USE ONLY (RUO). MUST NOT TO BE USED IN DIAGNOSTIC OR THERAPEUTIC APPLICATIONS.**



Western blot analysis of extracts of various cell lines, using DYNC2L1 antibody (STJ26842) at 1:1000 dilution. Secondary antibody: HRP Goat Anti-Rabbit IgG (H+L) (STJS000856) at 1:10000 dilution. Lysates/proteins: 25 µg per lane. Blocking buffer: 3% nonfat dry milk in TBST. Detection: ECL Basic Kit. Exposure time: 5s.