

Anti-RBBP9 antibody (1-186) (STJ26678)

GENERAL INFORMATION

Product Type	Primary antibodies
Applications	WB/IHC-P/ELISA
Host / Source	Rabbit
Reactivity	Human/Mouse/Rat

PRODUCT PROPERTIES

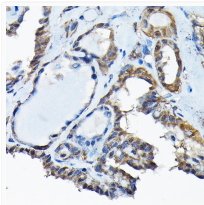
Clonality	Polyclonal
Concentration	Lot specific
Conjugation	Unconjugated
Purification	Affinity purification
Dilution Range	WB:1:500-1:2000 IHC-P:1:50-1:200 ELISA:Recommended starting concentration is 1 µg/mL. Please optimize the concentration based on your specific assay requirements.
Formulation	PBS with 0.02% Sodium Azide, 50% Glycerol, pH 7.3.
Isotype	IgG
Molecular Weight	Protein Mw: 21kDa Observed Mw: 18kDa
Storage Instruction	Store at -20°C for up to 1 year from the date of receipt, and avoid repeat freeze-thaw cycles.

TARGET INFORMATION

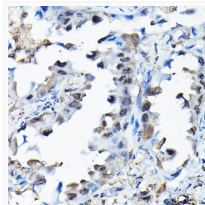
Gene ID	10741
Gene Symbol	RBBP9
UniProt ID	RBBP9_HUMAN
Immunogen Region	1-186
Immunogen Sequence	MASPSKAVIVPGNGGGDVTTHG WYGWVKKELEKIPGFOCLAKNMPDPITARESIIWLPFME TELHCDEKTIIGHSSGAIAAMRYAETHRVYAIIVLSAYTSDLGDENERASGYFTRPWQW EKIKANCPYIVQFGSTDDPF LPWKEQQEVADRLETKLHKF TDCGHFQNTTEFHELITVVKSLKQVPA
Specificity	Recombinant fusion protein containing a sequence corresponding to amino acids 1-186 of human RBBP9 (NP_006597.2).

ADDITIONAL INFORMATION

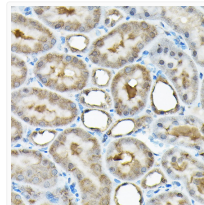
Note **STRICTLY FOR FURTHER SCIENTIFIC RESEARCH USE ONLY (RUO). MUST NOT TO BE USED IN DIAGNOSTIC OR THERAPEUTIC APPLICATIONS.**



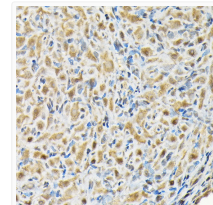
Immunohistochemistry analysis of paraffin-embedded human thyroid cancer using RBBP9 Rabbit polyclonal antibody (STJ26678) at dilution of 1:200 (40x lens). Perform high pressure antigen retrieval with 10 mM citrate buffer pH 6.0 before commencing with immunohistochemistry staining protocol.



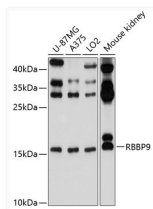
Immunohistochemistry analysis of paraffin-embedded human lung cancer using RBBP9 Rabbit polyclonal antibody (STJ26678) at dilution of 1:200 (40x lens). Perform high pressure antigen retrieval with 10 mM citrate buffer pH 6.0 before commencing with immunohistochemistry staining protocol.



Immunohistochemistry analysis of paraffin-embedded rat kidney using RBBP9 Rabbit polyclonal antibody (STJ26678) at dilution of 1:200 (40x lens). Perform high pressure antigen retrieval with 10 mM citrate buffer pH 6.0 before commencing with immunohistochemistry staining protocol.



Immunohistochemistry analysis of paraffin-embedded rat ovary using RBBP9 Rabbit polyclonal antibody (STJ26678) at dilution of 1:200 (40x lens). Perform high pressure antigen retrieval with 10 mM citrate buffer pH 6.0 before commencing with immunohistochemistry staining protocol.



Western blot analysis of extracts of various cell lines, using RBBP9 antibody (STJ26678) at 1:1000 dilution. Secondary antibody: HRP Goat Anti-Rabbit IgG (H+L) (STJS000856) at 1:10000 dilution. Lysates/proteins: 25 µg per lane. Blocking buffer: 3% nonfat dry milk in TBST. Detection: ECL Basic Kit. Exposure time: 10s.