

## Anti-ALDH6A1 antibody (326-535) (STJ26234)

### GENERAL INFORMATION

Product Type	Primary antibodies
Applications	WB/IF/ICC/ELISA
Host / Source	Rabbit
Reactivity	Human/Mouse/Rat

### PRODUCT PROPERTIES

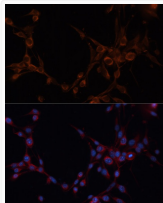
Clonality	Polyclonal
Concentration	Lot specific
Conjugation	Unconjugated
Purification	Affinity purification
Dilution Range	WB:1:500-1:2000 IF/CC:1:50-1:200 ELISA:Recommended starting concentration is 1 µg/mL. Please optimize the concentration based on your specific assay requirements.
Formulation	PBS with 0.02% Sodium Azide, 50% Glycerol, pH 7.3.
Isotype	IgG
Molecular Weight	Protein Mw: 58kDa Observed Mw: 58kDa
Storage Instruction	Store at -20°C for up to 1 year from the date of receipt, and avoid repeat freeze-thaw cycles.

### TARGET INFORMATION

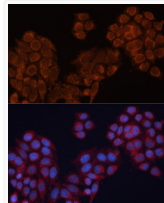
Gene ID	<a href="#">4329</a>
Gene Symbol	<a href="#">ALDH6A1</a>
UniProt ID	<a href="#">MMSA_HUMAN</a>
Immunogen Region	326-535
Immunogen Sequence	VGEAKKWLPELVEHAKNLRV NAGDQPGADLGPLITPQAKE RVCNLDISGTKEGASILLDG RKIKVKGYENGFVGPPTIIS NVKPNMTCYKEEIFGPVLVV LETETLDEAIQVNNNPYGN GTAIFTTNGATARKYAHLVD VGQVGVNVPVPLPMFSFT GSRSSFRGDTNFGKQGIQF YTQLKTITSQWKEEDATLSS PAVVMPTMGR
Specificity	Recombinant fusion protein containing a sequence corresponding to amino acids 326-535 of human ALDH6A1 (NP_005580.1).

### ADDITIONAL INFORMATION

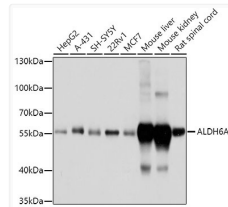
Note **STRICTLY FOR FURTHER SCIENTIFIC RESEARCH USE ONLY (RUO). MUST NOT TO BE USED IN DIAGNOSTIC OR THERAPEUTIC APPLICATIONS.**



Immunofluorescence analysis of NIH/3T3 cells using ALDH6A1 antibody (STJ26234) at dilution of 1:100. Blue: DAPI for nuclear staining.



Immunofluorescence analysis of HeLa cells using ALDH6A1 antibody (STJ26234) at dilution of 1:100. Blue: DAPI for nuclear staining.



Western blot analysis of extracts of various cell lines, using ALDH6A1 antibody (STJ26234) at 1:1000 dilution. Secondary antibody: HRP Goat Anti-Rabbit IgG (H+L) (STJS000856) at 1:10000 dilution. Lysates/proteins: 25 µg per lane. Blocking buffer: 3% nonfat dry milk in TBST. Detection: ECL Basic Kit. Exposure time: 1s.