

Anti-INPP5A antibody (10-200) (STJ26233)

GENERAL INFORMATION

Product Type	Primary antibodies
Applications	WB/ELISA
Host / Source	Rabbit
Reactivity	Mouse/Rat

PRODUCT PROPERTIES

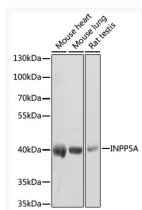
Clonality	Polyclonal
Concentration	Lot specific
Conjugation	Unconjugated
Purification	Affinity purification
Dilution Range	WB:1:500-1:2000 ELISA:Recommended starting concentration is 1 μ g/mL. Please optimize the concentration based on your specific assay requirements.
Formulation	PBS with 0.02% Sodium Azide, 50% Glycerol, pH 7.3.
Isotype	IgG
Molecular Weight	Protein Mw: 48kDa Observed Mw: 40kDa
Storage Instruction	Store at -20°C for up to 1 year from the date of receipt, and avoid repeat freeze-thaw cycles.

TARGET INFORMATION

Gene ID	3632
Gene Symbol	INPP5A
UniProt ID	I5P1_HUMAN
Immunogen Region	10-200
Immunogen Sequence	TAVLLVTANVGSFLFDDPENL QKNWLREFYQVVHThKPHFM ALHCQEFGGKNYEASMSHVD KFVKELLSSDAMKEYNRARV YLDENYKSQEHFTALGsfYf LHESLKNiYQFDfKAKKYRK VAGKEiYSDTLestPMLEKE KfPQDYfPECKWsrKGFIRT RWCIADCAFDLVNIHLfHfDA SNLVAWETSps
Specificity	Recombinant fusion protein containing a sequence corresponding to amino acids 10-200 of human INPP5A (NP_005530.3).

ADDITIONAL INFORMATION

Note STRICTLY FOR FURTHER SCIENTIFIC RESEARCH USE ONLY (RUO). MUST NOT TO BE USED IN DIAGNOSTIC OR THERAPEUTIC APPLICATIONS.



Western blot analysis of extracts of various cell lines, using INPP5A antibody (STJ26233) at 1:1000 dilution. Secondary antibody: HRP Goat Anti-Rabbit IgG (H+L) (STJS000856) at 1:10000 dilution. Lysates/proteins: 25 μ g per lane. Blocking buffer: 3% nonfat dry milk in TBST. Detection: ECL Basic Kit. Exposure time: 30s.