

## Anti-WNK1 antibody (1-210) (STJ26212)

### GENERAL INFORMATION

|               |                    |
|---------------|--------------------|
| Product Type  | Primary antibodies |
| Applications  | WB/IF/ICC/ELISA    |
| Host / Source | Rabbit             |
| Reactivity    | Human              |

### PRODUCT PROPERTIES

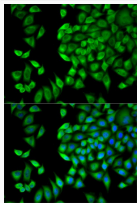
|                     |  |
|---------------------|--|
| Clonality           | Polyclonal   |
| Concentration       | Lot specific   |
| Conjugation         | Unconjugated   |
| Purification        | Affinity purification  |
| Dilution Range      | WB:1:500-1:2000<br>IF/CC:1:50-1:200<br>ELISA:Recommended starting concentration is 1 Mu g/mL. Please optimize the concentration based on your specific assay requirements. |
| Formulation         | PBS with 0.02% Sodium Azide, 50% Glycerol, pH 7.3.   |
| Isotype             | IgG  |
| Molecular Weight    | Protein Mw: 251kDa<br>Observed Mw: 300kDa  |
| Storage Instruction | Store at -20°C for up to 1 year from the date of receipt, and avoid repeat freeze-thaw cycles.   |

### TARGET INFORMATION

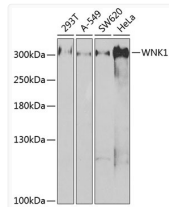
|                    |   |
|--------------------|---|
| Gene ID            | <a href="#">65125</a>   |
| Gene Symbol        | <a href="#">WNK1</a>  |
| UniProt ID         | <a href="#">WNK1_HUMAN</a>  |
| Immunogen Region   | 1-210   |
| Immunogen Sequence | MSGGAAEKQSSTPGSLFLSP PAPAPKNGSSSDSSVGEKLG AAAADAVTGRTEEYRRRRHT<br>MDKDSRGAATTTTTEHRFF RRSVICDSNATALELPLPL SLPQPSIPAAVPQSAPPEPH<br>REETVTATATSQVAQQPPAA AAPGEQAVAGPAPSTVPSST SKDRPVSQPSLVGSKKEEPPP<br>ARSGSGGSAKEPQEERSQQ QDDIEELETK |
| Specificity        | Recombinant fusion protein containing a sequence corresponding to amino acids 1-210 of human WNK1 (NP_055638.2).  |

### ADDITIONAL INFORMATION

Note **STRICTLY FOR FURTHER SCIENTIFIC RESEARCH USE ONLY (RUO). MUST NOT TO BE USED IN DIAGNOSTIC OR THERAPEUTIC APPLICATIONS.**



Immunofluorescence analysis of HeLa cells using WNK1 Rabbit polyclonal antibody (STJ26212). Secondary antibody: Cy3 Goat Anti-Rabbit IgG (H+L) at 1:500 dilution. Blue: DAPI for nuclear staining.



Western blot analysis of various lysates using WNK1 Rabbit polyclonal antibody (STJ26212) at 1:1000 dilution. Secondary antibody: HRP Goat Anti-Rabbit IgG (H+L) (STJS000856) at 1:10000 dilution. Lysates/proteins: 25 Mu g per lane. Blocking buffer: 3% nonfat dry milk in TBST. Detection: ECL Basic Kit. Exposure time: 90s.