

Anti-IGFBP4 antibody (22-258) (STJ26194)

GENERAL INFORMATION

Product Type	Primary antibodies
Applications	WB/IHC-P/IF/ICC/ELISA
Host / Source	Rabbit
Reactivity	Human/Mouse/Rat

PRODUCT PROPERTIES

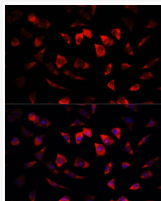
Clonality	Polyclonal
Concentration	Lot specific
Conjugation	Unconjugated
Purification	Affinity purification
Dilution Range	WB:1:500-1:2000 IHC-P:1:50-1:100 IF/CC:1:50-1:200 ELISA:Recommended starting concentration is 1 Mu g/mL. Please optimize the concentration based on your specific assay requirements.
Formulation	PBS with 0.02% Sodium Azide, 50% Glycerol, pH 7.3.
Isotype	IgG
Molecular Weight	Protein Mw: 28kDa Observed Mw: 17kDa
Storage Instruction	Store at -20°C for up to 1 year from the date of receipt, and avoid repeat freeze-thaw cycles.

TARGET INFORMATION

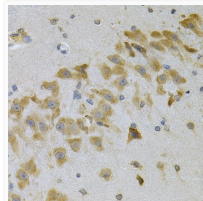
Gene ID	3487
Gene Symbol	IGFBP4
UniProt ID	IBP4_HUMAN
Immunogen Region	22-258
Immunogen Sequence	DEAIHCPPCSEELKARCRPP VGCEELVREPGCGCCATCAL GLGMPCGVYTPRCGSGLRCY PPRGVEKPLHTLMHGQGVCM ELAEIEAIQESLQPSDKDEG DHPNNSFSPCSAHDRCCLQK HFAKIRDRSTSGGKMKVNGA PREDARPVPGQSCQSELHRA LERLAASQSRTHEDLYIPI PNCDRNGNFHPKQCHPALDG QRGKWCVDRKTGVKLPGL EPKGELDCHQLADSFRE
Specificity	Recombinant fusion protein containing a sequence corresponding to amino acids 22-258 of human IGFBP4 (NP_001543.2).

ADDITIONAL INFORMATION

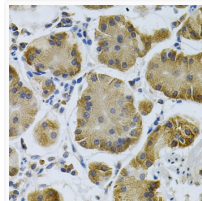
Note STRICTLY FOR FURTHER SCIENTIFIC RESEARCH USE ONLY (RUO). MUST NOT TO BE USED IN DIAGNOSTIC OR THERAPEUTIC APPLICATIONS.



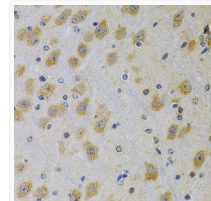
Immunofluorescence analysis of L929 cells using IGFBP4 Rabbit polyclonal antibody (STJ26194) at dilution of 1:100. Secondary antibody: Cy3 Goat Anti-Rabbit IgG (H+L) at 1:500 dilution. Blue: DAPI for nuclear staining.



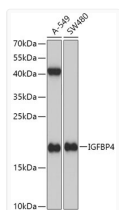
Immunohistochemistry analysis of IGFBP4 in paraffin-embedded mouse brain using IGFBP4 Rabbit polyclonal antibody (STJ26194) at dilution of 1:100 (40x lens). Perform microwave antigen retrieval with 10 mM PBS buffer pH 7. 2 before commencing with immunohistochemistry staining protocol.



Immunohistochemistry analysis of IGFBP4 in paraffin-embedded human stomach using IGFBP4 Rabbit polyclonal antibody (STJ26194) at dilution of 1:100 (40x lens). Perform microwave antigen retrieval with 10 mM PBS buffer pH 7. 2 before commencing with immunohistochemistry staining protocol.



Immunohistochemistry analysis of IGFBP4 in paraffin-embedded rat brain using IGFBP4 Rabbit polyclonal antibody (STJ26194) at dilution of 1:100 (40x lens). Perform microwave antigen retrieval with 10 mM PBS buffer pH 7. 2 before commencing with immunohistochemistry staining protocol.



Western blot analysis of various lysates using IGFBP4 Rabbit polyclonal antibody (STJ26194) at 1:1000 dilution. Secondary antibody: HRP Goat Anti-Rabbit IgG (H+L) (STJS000856) at 1:10000 dilution. Lysates/proteins: 25 Mu g per lane. Blocking buffer: 3% nonfat dry milk in TBST. Detection: ECL Basic Kit. Exposure time: 3min.