

## Anti-TMPRSS2 antibody (1-100) (STJ26191)

### GENERAL INFORMATION

Product Type	Primary antibodies
Applications	WB/IHC-P/IF/ICC/ELISA
Host / Source	Rabbit
Reactivity	Human/Mouse/Rat

### PRODUCT PROPERTIES

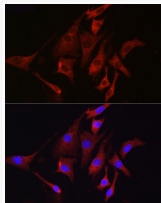
Clonality	Polyclonal
Concentration	Lot specific
Conjugation	Unconjugated
Purification	Affinity purification
Dilution Range	WB:1:500-1:1000 IHC-P:1:50-1:200 IF/ICC:1:50-1:200 ELISA:Recommended starting concentration is 1 µg/mL. Please optimize the concentration based on your specific assay requirements.
Formulation	PBS with 0.09% Sodium Azide, 50% Glycerol, pH7.3.
Isotype	IgG
Molecular Weight	Protein Mw: 54kDa Observed Mw: 70kDa/32kDa
Storage Instruction	Store at -20°C for up to 1 year from the date of receipt, and avoid repeat freeze-thaw cycles.

### TARGET INFORMATION

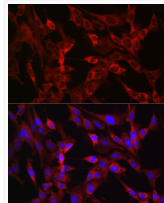
Gene ID	<a href="#">7113</a>
Gene Symbol	<a href="#">TMPRSS2</a>
UniProt ID	<a href="#">TMPS2_HUMAN</a>
Immunogen Region	1-100
Immunogen Sequence	MALNSGSPAIGPYENHGY QPENPYPAQFTVVPTVYEVH PAQYYSPVPQYAPRVLTA SNPVVCTQPKSPSGTVCTSK TKKALCITLTLGTFLVGAAL
Specificity	A synthetic peptide corresponding to a sequence within amino acids 1-100 of human TMPRSS2 (NP_005647.3).

### ADDITIONAL INFORMATION

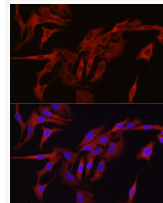
Note **STRICTLY FOR FURTHER SCIENTIFIC RESEARCH USE ONLY (RUO). MUST NOT TO BE USED IN DIAGNOSTIC OR THERAPEUTIC APPLICATIONS.**



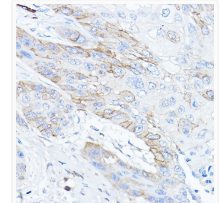
Immunofluorescence analysis of NIH/3T3 cells using TMPRSS2 Rabbit polyclonal antibody (STJ26191) at dilution of 1:50 (40x lens). Secondary antibody: Cy3 Goat Anti-Rabbit IgG (H+L) at 1:500 dilution. Blue: DAPI for nuclear staining.



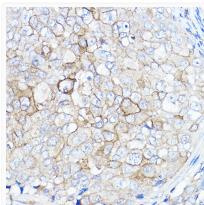
Immunofluorescence analysis of C6 cells using TMPRSS2 Rabbit polyclonal antibody (STJ26191) at dilution of 1:50 (40x lens). Secondary antibody: Cy3 Goat Anti-Rabbit IgG (H+L) at 1:500 dilution. Blue: DAPI for nuclear staining.



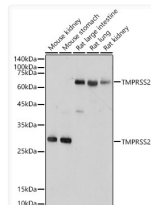
Immunofluorescence analysis of A-549 cells using TMPRSS2 Rabbit polyclonal antibody (STJ26191) at dilution of 1:50 (40x lens). Secondary antibody: Cy3 Goat Anti-Rabbit IgG (H+L) at 1:500 dilution. Blue: DAPI for nuclear staining.



Immunohistochemistry analysis of TMPRSS2 in paraffin-embedded human esophageal cancer using TMPRSS2 Rabbit polyclonal antibody (STJ26191) at dilution of 1:50 (40x lens). Perform high pressure antigen retrieval with 10 mM citrate buffer pH 6.0 before commencing with immunohistochemistry staining protocol.



Immunohistochemistry analysis of TMPRSS2 in paraffin-embedded human breast cancer using TMPRSS2 Rabbit polyclonal antibody (STJ26191) at dilution of 1:50 (40x lens). Perform high pressure antigen retrieval with 10 mM citrate buffer pH 6.0 before commencing with immunohistochemistry staining protocol.



Western blot analysis of various lysates using TMPRSS2 Rabbit polyclonal antibody (STJ26191) at 1:1000 dilution. Secondary antibody: HRP Goat Anti-Rabbit IgG (H+L) (STJS000856) at 1:10000 dilution. Lysates/proteins: 25 µg per lane. Blocking buffer: 3% nonfat dry milk in TBST. Detection: ECL Enhanced Kit. Exposure time: 180s.