

Anti-NR1I3 antibody (103-352) (STJ26189)

GENERAL INFORMATION

Product Type	Primary antibodies
Applications	WB/IF/ICC/IP/ELISA
Host / Source	Rabbit
Reactivity	Human/Mouse/Rat

PRODUCT PROPERTIES

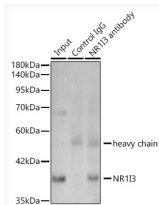
Clonality	Polyclonal
Concentration	Lot specific
Conjugation	Unconjugated
Purification	Affinity purification
Dilution Range	WB:1:500-1:1000 IF/CC:1:50-1:200 IP:0.5 Mu g-4 Mu g antibody for 200 Mu g-400 Mu g extracts of whole cells ELISA:Recommended starting concentration is 1 Mu g/mL. Please optimize the concentration based on your specific assay requirements
Formulation	PBS with 0.05% Proclin300, 50% Glycerol, pH7.3.
Isotype	IgG
Molecular Weight	Protein Mw: 40kDa Observed Mw: 45kDa/40kDa
Storage Instruction	Store at -20°C for up to 1 year from the date of receipt, and avoid repeat freeze-thaw cycles.

TARGET INFORMATION

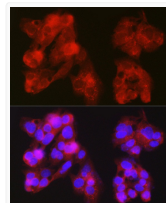
Gene ID	9970
Gene Symbol	NR1I3
UniProt ID	NR1I3_HUMAN
Immunogen Region	103-352
Immunogen Sequence	PVQLSKEQEELIRTLGGAHT RHMGTMFEQFVQFRPPAHLF IHHQPLPTLAPVLPVTHFA DINTFMVLQVIFKTDLPVF RSLPIEDQISLLKGAAVEIC HIVLNTTFCLQTQNFLOGPL RYTIEDGARVSPTVGFQVEF LELLFHFHGTLRKQLQEQPE YVLLAAMALFSPDRPGVTQR DEIDQLQEEMALTLSYIKG QQRPRDRFLYAKLLGLLAE LRSINEAYGYQIQHIQGLS
Specificity	Recombinant fusion protein containing a sequence corresponding to amino acids 103-352 of human NR1I3 (NP_001070948.1).

ADDITIONAL INFORMATION

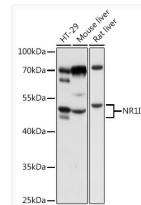
Note **STRICTLY FOR FURTHER SCIENTIFIC RESEARCH USE ONLY (RUO). MUST NOT TO BE USED IN DIAGNOSTIC OR THERAPEUTIC APPLICATIONS.**



Immunoprecipitation of NR1I3 in 300 µg extracts from 293T cells transfected with NR1I3 using 3 µg NR1I3 Rabbit polyclonal antibody (STJ26189). Western blot analysis was performed using NR1I3 Rabbit polyclonal antibody (STJ26189) at 1:1000 dilution.



Immunofluorescence analysis of HepG2 cells using NR1I3 Rabbit polyclonal antibody (STJ26189) at dilution of 1:100 (40x lens). Secondary antibody: Cy3 Goat Anti-Rabbit IgG (H+L) at 1:500 dilution. Blue: DAPI for nuclear staining.



Western blot analysis of various lysates using NR1I3 Rabbit polyclonal antibody (STJ26189) at 1:1000 dilution. Secondary antibody: HRP Goat Anti-Rabbit IgG (H+L) (STJS000856) at 1:10000 dilution. Lysates/proteins: 25 Mu g per lane. Blocking buffer: 3% nonfat dry milk in TBST. Detection: ECL Basic Kit. Exposure time: 10s.