

Anti-IL1R2 antibody (20-320) (STJ26184)

GENERAL INFORMATION

Product Type	Primary antibodies
Applications	WB/ELISA
Host / Source	Rabbit
Reactivity	Human/Mouse

PRODUCT PROPERTIES

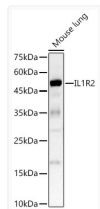
Clonality	Polyclonal
Concentration	Lot specific
Conjugation	Unconjugated
Purification	Affinity purification
Dilution Range	WB:1:500-1:1000 ELISA:Recommended starting concentration is 1 Mu g/mL. Please optimize the concentration based on your specific assay requirements.
Formulation	PBS with 0.02% Sodium Azide, 50% Glycerol, pH 7.3.
Isotype	IgG
Molecular Weight	Protein Mw: 45kDa Observed Mw: 45kDa/60-70kDa/45kDa
Storage Instruction	Store at-20°C for up to 1 year from the date of receipt, and avoid repeat freeze-thaw cycles.

TARGET INFORMATION

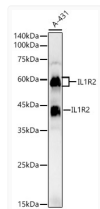
Gene ID	7850
Gene Symbol	IL1R2
UniProt ID	IL1R2_HUMAN
Immunogen Region	20-320
Immunogen Sequence	AHTGAARSCRFRGRHYKREF RLEGEPVALRCPQVPYWLWA SVSPRINLTWHKNDSARTVP GEEETRMWAQDGALWLLPAL QEDSGTYVCTTRNASYCDKM SIELRVFENTDAFLPFISYP QILTLSTSGVLVCPDLSEFT RDKTDVKIQWYKDSLLDKD NEKFLSVRGTTLLVHDVAL EDAGYYRCVLTFAHEGQQYN ITRSIELRIKKKKEETIPVI ISPLKTISASLGSRLTIPC
Specificity	Recombinant fusion protein containing a sequence corresponding to amino acids 20-320 of human IL1R2 (NP_775465.1).

ADDITIONAL INFORMATION

Note STRICTLY FOR FURTHER SCIENTIFIC RESEARCH USE ONLY (RUO). MUST NOT TO BE USED IN DIAGNOSTIC OR THERAPEUTIC APPLICATIONS.



Western blot analysis of lysates from Mouse lung using IL1R2 Rabbit polyclonal antibody (STJ26184) at 1:800 dilution. Secondary antibody:HRP Goat Anti-Rabbit IgG (H+L) (STJS000856) at 1:10000 dilution. Lysates/proteins: 25 Mu g per lane. Blocking buffer: 3% nonfat dry milk in TBST. Detection:ECL Basic Kit. Exposuretime:90s.



Western blot analysis of lysates from A-431 cells, using IL1R2 Rabbit polyclonal antibody (STJ26184) at 1:1000 dilution. Secondary antibody: HRP Goat Anti-Rabbit IgG (H+L) (STJS000856) at 1:10000 dilution. Lysates/proteins: 25 Mu g per lane. Blocking buffer: 3% nonfat dry milk in TBST. Detection: ECL Basic Kit. Exposure time: 60s.