

## Anti-IL24 antibody (52-140) (STJ26183)

### GENERAL INFORMATION

Product Type	Primary antibodies
Applications	WB/IHC-P/ELISA
Host / Source	Rabbit
Reactivity	Mouse/Rat

### PRODUCT PROPERTIES

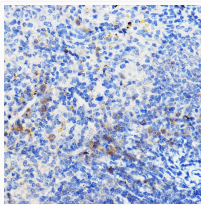
Clonality	Polyclonal
Concentration	Lot specific
Conjugation	Unconjugated
Purification	Affinity purification
Dilution Range	WB:1:500-1:2000 IHC-P:1:50-1:200 ELISA:Recommended starting concentration is 1 Mu g/mL. Please optimize the concentration based on your specific assay requirements.
Formulation	PBS with 0.09% Sodium Azide, 50% Glycerol, pH 7.3.
Isotype	IgG
Molecular Weight	Protein Mw: 24kDa Observed Mw: 26kDa
Storage Instruction	Store at -20°C for up to 1 year from the date of receipt, and avoid repeat freeze-thaw cycles.

### TARGET INFORMATION

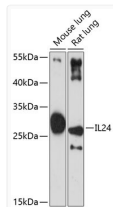
Gene ID	<a href="#">11009</a>
Gene Symbol	<a href="#">IL24</a>
UniProt ID	<a href="#">IL24_HUMAN</a>
Immunogen Region	52-140
Immunogen Sequence	GQEFHFGPCQVKGVVQKLW EAFWAVKDTMQAQDNITSAR LLQQEVLQNVSDAESCYL VH TLLEFYLKT VFKNYHNR TVE VRTLKSFST
Specificity	Recombinant fusion protein containing a sequence corresponding to amino acids 52-140 of human IL24 (NP_001172085.1).

### ADDITIONAL INFORMATION

Note STRICTLY FOR FURTHER SCIENTIFIC RESEARCH USE ONLY (RUO). MUST NOT TO BE USED IN DIAGNOSTIC OR THERAPEUTIC APPLICATIONS.



Immunohistochemistry analysis of IL24 in paraffin-embedded mouse spleen using IL24 Rabbit polyclonal antibody (STJ26183) at dilution of 1:100 (40x lens). Perform high pressure antigen retrieval with 10 mM citrate buffer pH 6.0 before commencing with immunohistochemistry staining protocol.



Western blot analysis of various lysates using IL24 Rabbit polyclonal antibody (STJ26183) at 1:3000 dilution. Secondary antibody: HRP Goat Anti-Rabbit IgG (H+L) (STJS000856) at 1:10000 dilution. Lysates/proteins: 25 Mu g per lane. Blocking buffer: 3% nonfat dry milk in TBST. Detection: ECL Basic Kit. Exposure time: 90s.