

Anti-ARG1 antibody (1-322) (STJ26182)

GENERAL INFORMATION

Product Type	Primary antibodies
Applications	WB/IF/ICC/ELISA
Host / Source	Rabbit
Reactivity	Human/Mouse/Rat

PRODUCT PROPERTIES

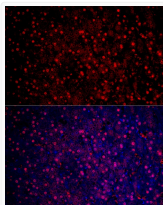
Clonality	Polyclonal
Concentration	Lot specific
Conjugation	Unconjugated
Purification	Affinity purification
Dilution Range	WB:1:500-1:1000 IF/CC:1:50-1:200 ELISA:Recommended starting concentration is 1 Mu g/mL. Please optimize the concentration based on your specific assay requirements.
Formulation	PBS with 0.02% Sodium Azide, 50% Glycerol, pH 7.3.
Isotype	IgG
Molecular Weight	Protein Mw: 35kDa Observed Mw: 40kDa
Storage Instruction	Store at -20°C for up to 1 year from the date of receipt, and avoid repeat freeze-thaw cycles.

TARGET INFORMATION

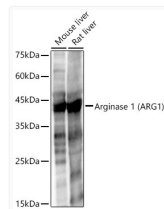
Gene ID	383
Gene Symbol	ARG1
UniProt ID	ARG1_HUMAN
Immunogen Region	1-322
Immunogen Sequence	MSAKSRTIGIIGAPFSKGQP RGGVEEGPTVLRKAGLLEKL KEQECDVKDYGDLPFADIPN DSPFQIVKNPRSVGKASEQL AGKVAEVKKNRISLVLGGD HSLAIGSISGHARVHPDLGV IWWDAHTDINTPLTTTSGNL HGQPVSFLLKELKKGKIPDVP GFSWVTPCISAKDIVYIGLR DVDPGEHYILKTLGIKYFSM TEVDRLGIGKVMEEETLSYLL GRKKRPIHLSFDVVDGLDPS
Specificity	Recombinant fusion protein containing a sequence corresponding to amino acids 1-322 of human Arginase 1 (ARG1) (NP_000036.2).

ADDITIONAL INFORMATION

Note STRICTLY FOR FURTHER SCIENTIFIC RESEARCH USE ONLY (RUO). MUST NOT TO BE USED IN DIAGNOSTIC OR THERAPEUTIC APPLICATIONS.



Immunofluorescence analysis of paraffin-embedded human liver cancer using Arginase 1 (ARG1) Rabbit polyclonal antibody (STJ26182) at dilution of 1:50 (40x lens). Secondary antibody: Cy3 Goat Anti-Rabbit IgG (H+L) at 1:500 dilution. Blue: DAPI for nuclear staining.



Western blot analysis of various lysates using Arginase 1 (ARG1) Rabbit polyclonal antibody (STJ26182) at 1:1000 dilution. Secondary antibody: HRP Goat Anti-Rabbit IgG (H+L) (STJS000856) at 1:10000 dilution. Lysates/proteins: 25 Mu g per lane. Blocking buffer: 3 % nonfat dry milk in TBST. Detection: ECL Basic Kit. Exposure time: 1s.