

Anti-HSD3B2 antibody (1-287) (STJ26181)

GENERAL INFORMATION

Product Type	Primary antibodies
Applications	WB/IF/ICC/ELISA
Host / Source	Rabbit
Reactivity	Human/Mouse

PRODUCT PROPERTIES

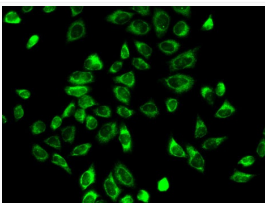
Clonality	Polyclonal
Concentration	Lot specific
Conjugation	Unconjugated
Purification	Affinity purification
Dilution Range	WB:1:500-1:1000 IF/CC:1:10-1:100 ELISA:Recommended starting concentration is 1 Mu g/mL. Please optimize the concentration based on your specific assay requirements.
Formulation	PBS with 0.05% Proclin300, 50% Glycerol, pH 7.3.
Isotype	IgG
Molecular Weight	Protein Mw: 42kDa Observed Mw: 42kDa
Storage Instruction	Store at -20°C for up to 1 year from the date of receipt, and avoid repeat freeze-thaw cycles.

TARGET INFORMATION

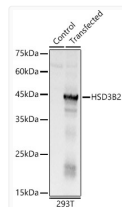
Gene ID	3284
Gene Symbol	HSD3B2
UniProt ID	3BHS2_HUMAN
Immunogen Region	1-287
Immunogen Sequence	MGWSCSLVTGAGLLGQRIVR LLVEEKELKEIRALDKAFRP ELREEFSKLNRTKLTVLEG DILDEPFLKRACQDVSIVH TACIIDVFGVTHRESIMNVN VKGTQLLLEACVQASVPVFI YTSSIEVAGPNSYKEIIQNG HEEPLENTWPTPYPSYKKL AEKAVLAANGWNLKNGDTLY TCALRPITYYEGGGPFLSAS INEALNNNGILSSVGKFSTV NPVYVGNVAWAHILALRAL
Specificity	Recombinant fusion protein containing a sequence corresponding to amino acids 1-287 of human HSD3B2 (NP_000189.1).

ADDITIONAL INFORMATION

Note **STRICTLY FOR FURTHER SCIENTIFIC RESEARCH USE ONLY (RUO). MUST NOT TO BE USED IN DIAGNOSTIC OR THERAPEUTIC APPLICATIONS.**



Immunofluorescence analysis of A-549 cells using HSD3B2 Rabbit polyclonal antibody (STJ26181). Secondary antibody: Cy3 Goat Anti-Rabbit IgG (H+L) at 1:500 dilution.



Western blot analysis of lysates from wild type (WT) and 293T cells transfected with HSD3B2, using HSD3B2 Rabbit polyclonal antibody (STJ26181) at 1:400 dilution. Secondary antibody: HRP Goat Anti-Rabbit IgG (H+L) (STJS000856) at 1:10000 dilution. Lysates/proteins: 25 Mu g per lane. Blocking buffer: 3% nonfat dry milk in TBST. Detection: ECL Basic Kit. Exposure time: 0. 5s.