

## Anti-TGFBR2 antibody (23-280) (STJ26170)

### GENERAL INFORMATION

Product Type	Primary antibodies
Applications	WB/IF/ICC/ELISA
Host / Source	Rabbit
Reactivity	Human/Mouse/Rat

### PRODUCT PROPERTIES

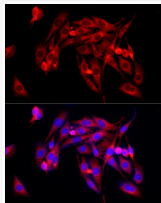
Clonality	Polyclonal
Concentration	Lot specific
Conjugation	Unconjugated
Purification	Affinity purification
Dilution Range	WB:1:500-1:2000 IF/CC:1:50-1:200 ELISA:Recommended starting concentration is 1 µg/mL. Please optimize the concentration based on your specific assay requirements.
Formulation	PBS with 0.05% Proclin300, 50% Glycerol, pH 7.3.
Isotype	IgG
Molecular Weight	Protein Mw: 65kDa Observed Mw: 70kDa, 85kDa/70kDa (非糖基化), 85kDa (糖基化)
Storage Instruction	Store at -20°C for up to 1 year from the date of receipt, and avoid repeat freeze-thaw cycles.

### TARGET INFORMATION

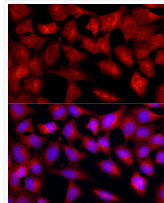
Gene ID	<a href="#">7048</a>
Gene Symbol	<a href="#">TGFB2</a>
UniProt ID	<a href="#">TGFR2_HUMAN</a>
Immunogen Region	23-280
Immunogen Sequence	TIPPHVQKSVNNDMIVTDNN GAVKFPQLCKFCDFVFSTCD NQKSCMSNCSITSICEKPOE VCVAVWRKNDENITLETVCH DPKLPYHDFILEDAAAPKCI MKEKKKPGETFFMCSCSSDE CNDNIIFSEEYNTSNPDL LL VIFQVTGISLLPPLGVAISV IIFCYRVNRQQKLSSTWE TGKTRKLMFEFSEHCAILED DRSDISSTCANNINHNTELL PIELDTLVGKGRFAEYVKA
Specificity	Recombinant fusion protein containing a sequence corresponding to amino acids 23-280 of human TGF beta Receptor II (TGFB2) (NP_003233.4).

### ADDITIONAL INFORMATION

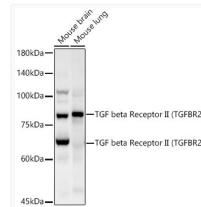
Note **STRICTLY FOR FURTHER SCIENTIFIC RESEARCH USE ONLY (RUO). MUST NOT TO BE USED IN DIAGNOSTIC OR THERAPEUTIC APPLICATIONS.**



Immunofluorescence analysis of PC-12 cells using TGF beta Receptor II (TGFB2) Rabbit polyclonal antibody (STJ26170) at dilution of 1:200 (40x lens). Secondary antibody: Cy3 Goat Anti-Rabbit IgG (H+L) at 1:500 dilution. Blue: DAPI for nuclear staining.



Immunofluorescence analysis of HeLa cells using TGF beta Receptor II (TGFB2) Rabbit polyclonal antibody (STJ26170) at dilution of 1:200 (40x lens). Secondary antibody: Cy3 Goat Anti-Rabbit IgG (H+L) at 1:500 dilution. Blue: DAPI for nuclear staining.



Western blot analysis of various lysates using TGF beta Receptor II (TGFB2) Rabbit polyclonal antibody (STJ26170) at 1:2000 dilution. Secondary antibody: HRP Goat Anti-Rabbit IgG (H+L) (STJS000856) at 1:10000 dilution. Lysates/proteins: 25 µg per lane. Blocking buffer: 3 % nonfat dry milk in TBST. Detection: ECL Basic Kit. Exposure time: 5s.