

## Anti-ZEB1 antibody (490-710) (STJ26150)

### GENERAL INFORMATION

Product Type	Primary antibodies
Applications	WB/IHC-P/IF/ICC/ELISA
Host / Source	Rabbit
Reactivity	Human/Mouse/Rat

### PRODUCT PROPERTIES

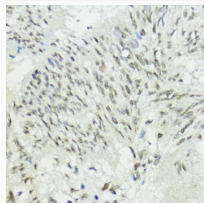
Clonality	Polyclonal
Concentration	Lot specific
Conjugation	Unconjugated
Purification	Affinity purification
Dilution Range	WB:1:500-1:1000 IHC-P:1:50-1:200 IF/ICC:1:100-1:200 ELISA:Recommended starting concentration is 1 Mu g/mL. Please optimize the concentration based on your specific assay requirements.
Formulation	PBS with 0.09% Sodium Azide, 50% Glycerol, pH 7.3.
Isotype	IgG
Molecular Weight	Protein Mw: 124kDa Observed Mw: 200kDa
Storage Instruction	Store at -20°C for up to 1 year from the date of receipt, and avoid repeat freeze-thaw cycles.

### TARGET INFORMATION

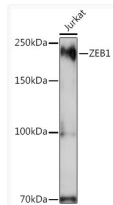
Gene ID	<a href="#">6935</a>
Gene Symbol	<a href="#">ZEB1</a>
UniProt ID	<a href="#">ZEB1_HUMAN</a>
Immunogen Region	490-710
Immunogen Sequence	QNLKKNPVATNSCKSEKLP EDLTVKSEKDKSFEGGVNDS TCLLCDDCPGDINALPELKH YDLKQPTQPPPLPAAEAEKP ESSVSSATGDGNLSPSQPPL KNLLSLLKAYYALNAQPSAE ELSKIADSVNLPLDVVKKWF EKMAGQISVQSSEPSSEP GKVNIPIAKNNDQPQSANANE PQDSTVNLQSPKMTNSPVL PVGSTTNGSRSSSTPSPSPLN L
Specificity	Recombinant fusion protein containing a sequence corresponding to amino acids 490-710 of human ZEB1 (NP_110378.3).

### ADDITIONAL INFORMATION

Note **STRICTLY FOR FURTHER SCIENTIFIC RESEARCH USE ONLY (RUO). MUST NOT TO BE USED IN DIAGNOSTIC OR THERAPEUTIC APPLICATIONS.**



Immunohistochemistry analysis of paraffin-embedded human gastric cancer using ZEB1 antibody (STJ26150) at dilution of 1:200 (40x lens). Perform microwave antigen retrieval with 10 mM PBS buffer pH 7.2 before commencing with immunohistochemistry staining protocol.



Western blot analysis of extracts of Jurkat cells, using ZEB1 Rabbit polyclonal antibody (STJ26150) at 1:1000 dilution. Secondary antibody: HRP Goat Anti-Rabbit IgG (H+L) (STJS000856) at 1:10000 dilution. Lysates/proteins: 25 Mu g per lane. Blocking buffer: 3% nonfat dry milk in TBST. Detection: ECL Basic Kit. Exposure time: 3s.