

Anti-XRCC4 antibody (1-336) (STJ26132)

GENERAL INFORMATION

Product Type	Primary antibodies
Applications	WB/IHC-P/IF/ICC/ELISA
Host / Source	Rabbit
Reactivity	Human/Rat

PRODUCT PROPERTIES

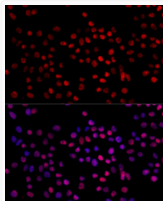
Clonality	Polyclonal
Concentration	Lot specific
Conjugation	Unconjugated
Purification	Affinity purification
Dilution Range	WB:1:500-1:1000 IHC-P:1:50-1:200 IF/ICC:1:50-1:100 ELISA:Recommended starting concentration is 1 Mu g/mL. Please optimize the concentration based on your specific assay requirements.
Formulation	PBS with 0.05% Proclin300, 50% Glycerol, pH 7.3.
Isotype	IgG
Molecular Weight	Protein Mw: 38kDa Observed Mw: 55kDa
Storage Instruction	Store at -20°C for up to 1 year from the date of receipt, and avoid repeat freeze-thaw cycles.

TARGET INFORMATION

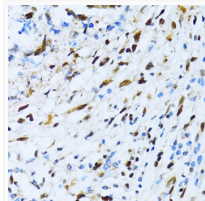
Gene ID	7518
Gene Symbol	XRCC4
UniProt ID	XRCC4_HUMAN
Immunogen Region	1-336
Immunogen Sequence	MERKISRIHLVSEPSITHFL QVSWSEKTLSESGFVITLTDGH SAWTGTVSESEISQEADDMA MEKGYVYVGLRKLKALLSGAGP ADVYTFNFSKESCYYFFFEKN LKDVSVFRLGGSFNLEKVENPA EVIRELICYCLDTIAENQAK NEHLQKENERLLRDWWDVQGR FFEKCVSAKEALETDLYKRF ILVLEKTKTKIRSLHNKLLN AAQEREKDIKQEGETAICSE MTADRDVYVDESTDEESEN
Specificity	Recombinant fusion protein containing a sequence corresponding to amino acids 1-336 of human XRCC4 (NP_001304941.1?).

ADDITIONAL INFORMATION

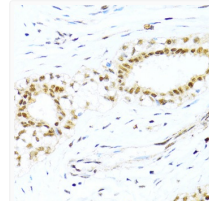
Note STRICTLY FOR FURTHER SCIENTIFIC RESEARCH USE ONLY (RUO). MUST NOT TO BE USED IN DIAGNOSTIC OR THERAPEUTIC APPLICATIONS.



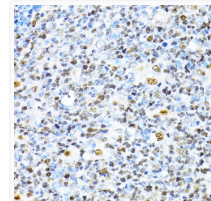
Immunofluorescence analysis of 293T cells using XRCC4 Rabbit polyclonal antibody (STJ26132) at dilution of 1:100. Blue: DAPI for nuclear staining.



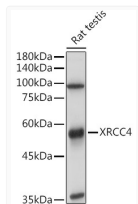
Immunohistochemistry analysis of XRCC4 in paraffin-embedded human gastric cancer using XRCC4 Rabbit polyclonal antibody (STJ26132) at dilution of 1:100 (40x lens). Perform microwave antigen retrieval with 10 mM PBS buffer pH 7. 2 before commencing with immunohistochemistry staining protocol.



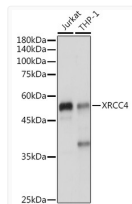
Immunohistochemistry analysis of XRCC4 in paraffin-embedded human breast cancer using XRCC4 Rabbit polyclonal antibody (STJ26132) at dilution of 1:100 (40x lens). Perform microwave antigen retrieval with 10 mM PBS buffer pH 7. 2 before commencing with immunohistochemistry staining protocol.



Immunohistochemistry analysis of XRCC4 in paraffin-embedded human appendix using XRCC4 Rabbit polyclonal antibody (STJ26132) at dilution of 1:100 (40x lens). Perform microwave antigen retrieval with 10 mM PBS buffer pH 7. 2 before commencing with immunohistochemistry staining protocol.



Western blot analysis of lysates from Rat testis, using XRCC4 Rabbit polyclonal antibody (STJ26132) at 1:1000 dilution. Secondary antibody: HRP Goat Anti-Rabbit IgG (H+L) (STJS000856) at 1:10000 dilution. Lysates/proteins: 25 Mu g per lane. Blocking buffer: 3% nonfat dry milk in TBST. Detection: ECL Basic Kit. Exposure time: 6s.



Western blot analysis of various lysates using XRCC4 Rabbit polyclonal antibody (STJ26132) at 1:1000 dilution. Secondary antibody: HRP Goat Anti-Rabbit IgG (H+L) (STJS000856) at 1:10000 dilution. Lysates/proteins: 25 Mu g per lane. Blocking buffer: 3% nonfat dry milk in TBST. Detection: ECL Enhanced Kit. Exposure time: 1s.