

## Anti-WNT3A antibody (139-155) (STJ26114)

### GENERAL INFORMATION

Product Type	Primary antibodies
Applications	WB/ELISA
Host / Source	Rabbit
Reactivity	Human/Mouse

### PRODUCT PROPERTIES

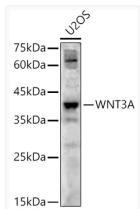
Clonality	Polyclonal
Concentration	Lot specific
Conjugation	Unconjugated
Purification	Affinity purification
Dilution Range	WB:1:500-1:1000 ELISA:Recommended starting concentration is 1 Mu g/mL. Please optimize the concentration based on your specific assay requirements.
Formulation	PBS with 0.09% Sodium Azide, 50% Glycerol, pH7.3.
Isotype	IgG
Molecular Weight	Protein Mw: 39kDa Observed Mw: 39kDa/42kDa
Storage Instruction	Store at -20°C for up to 1 year from the date of receipt, and avoid repeat freeze-thaw cycles.

### TARGET INFORMATION

Gene ID	<a href="#">89780</a>
Gene Symbol	<a href="#">WNT3A</a>
UniProt ID	<a href="#">WNT3A_HUMAN</a>
Immunogen Region	139-155
Immunogen Sequence	PVLDKATRESAFVHAIASAG VAFVTRSCAEGTAAICGCS SRHQGSPGKGWKWGGCSEDI EFGGMVSRREFADARENRPDA RSAMNRHNNEAGRQAIASHM HLKCKCHGLSGSCEVKTCWW SQPDFRAIGDFLKDKYDSAS EMVVEKHRESRGWVETLRPR YTYFKVPTERDLVYYEASPN FCEPNPETGSGFTRDRTCNV
Specificity	A synthetic peptide corresponding to a sequence within amino acids 100-200 of human WNT3A (NP_149122.1).

### ADDITIONAL INFORMATION

Note **STRICTLY FOR FURTHER SCIENTIFIC RESEARCH USE ONLY (RUO). MUST NOT TO BE USED IN DIAGNOSTIC OR THERAPEUTIC APPLICATIONS.**



Western blot analysis of U2OS, using WNT3A antibody (STJ26114) at 1:800 dilution. Secondary antibody: HRP Goat Anti-Rabbit IgG (H+L) (STJS000856) at 1:10000 dilution. Lysates/proteins: 25 Mu g per lane. Blocking buffer: 3% nonfat dry milk in TBST. Detection: ECL Enhanced Kit. Exposure time: 60s.