

Anti-USP5 antibody (1-280) (STJ26063)

GENERAL INFORMATION

Product Type	Primary antibodies
Applications	WB/IHC-P/IF/ICC/ELISA
Host / Source	Rabbit
Reactivity	Human/Mouse/Rat

PRODUCT PROPERTIES

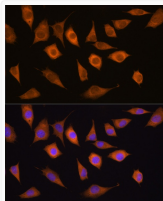
Clonality	Polyclonal
Concentration	Lot specific
Conjugation	Unconjugated
Purification	Affinity purification
Dilution Range	WB:1:1000-1:2000 IHC-P:1:50-1:200 IF/CC:1:50-1:200 ELISA:Recommended starting concentration is 1 Mu g/mL. Please optimize the concentration based on your specific assay requirements.
Formulation	PBS with 0.02% Sodium Azide, 50% Glycerol, pH 7.3.
Isotype	IgG
Molecular Weight	Protein Mw: 96kDa Observed Mw: 110kDa
Storage Instruction	Store at -20°C for up to 1 year from the date of receipt, and avoid repeat freeze-thaw cycles.

TARGET INFORMATION

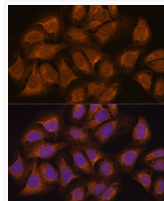
Gene ID	8078
Gene Symbol	USP5
UniProt ID	UBP5_HUMAN
Immunogen Region	1-280
Immunogen Sequence	MAELSEEALLSVLPTIRVPK AGDRVHKDECAFSFDTPSE GGLYICMNTFLGFGKQYVER HFNKTGQRVYLHLRRTTRPK EEDPATGTGDPPrKKPTRLA IGVEGGFDLSEEFELDEDV KIVLPDYLEIARDGLGGLP DIVRDRVTSAVEALLSADSA SRKQEVQAWDGEVRQVSKHA FSLKQLDNPARIPPCGWKCS KCDMRENLWLNLTGDSILCG RRYFDGSGGNNHAVEHYRE
Specificity	Recombinant fusion protein containing a sequence corresponding to amino acids 1-280 of human USP5 (NP_003472.2).

ADDITIONAL INFORMATION

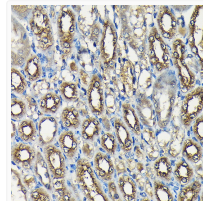
Note STRICTLY FOR FURTHER SCIENTIFIC RESEARCH USE ONLY (RUO). MUST NOT TO BE USED IN DIAGNOSTIC OR THERAPEUTIC APPLICATIONS.



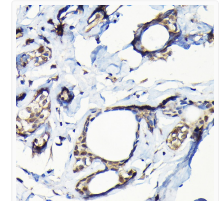
Immunofluorescence analysis of L929 cells using USP5 antibody (STJ26063) at dilution of 1:100. Blue: DAPI for nuclear staining.



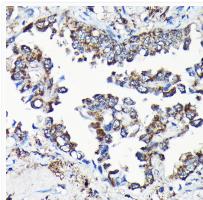
Immunofluorescence analysis of U2OS cells using USP5 antibody (STJ26063) at dilution of 1:100. Blue: DAPI for nuclear staining.



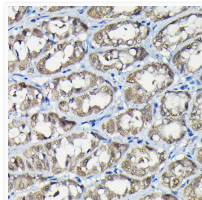
Immunohistochemistry analysis of paraffin-embedded mouse kidney using USP5 Rabbit polyclonal antibody (STJ26063) at dilution of 1:100 (40x lens). Perform high pressure antigen retrieval with 10 mM citrate buffer pH 6.0 before commencing with immunohistochemistry staining protocol.



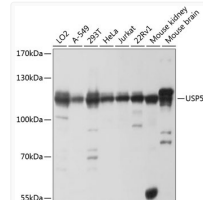
Immunohistochemistry analysis of paraffin-embedded human breast cancer using USP5 Rabbit polyclonal antibody (STJ26063) at dilution of 1:100 (40x lens). Perform high pressure antigen retrieval with 10 mM citrate buffer pH 6.0 before commencing with immunohistochemistry staining protocol.



Immunohistochemistry analysis of paraffin-embedded human lung cancer using USP5 Rabbit polyclonal antibody (STJ26063) at dilution of 1:100 (40x lens). Perform high pressure antigen retrieval with 10 mM citrate buffer pH 6.0 before commencing with immunohistochemistry staining protocol.



Immunohistochemistry analysis of paraffin-embedded rat stomach using USP5 Rabbit polyclonal antibody (STJ26063) at dilution of 1:100 (40x lens). Perform high pressure antigen retrieval with 10 mM citrate buffer pH 6.0 before commencing with immunohistochemistry staining protocol.



Western blot analysis of extracts of various cell lines, using USP5 antibody (STJ26063) at 1:1000 dilution. Secondary antibody: HRP Goat Anti-Rabbit IgG (H+L) (STJS000856) at 1:10000 dilution. Lysates/proteins: 25 Mu g per lane. Blocking buffer: 3% nonfat dry milk in TBST. Detection: ECL Basic Kit. Exposure time: 1s.