

Anti-UCP2 antibody (112-211) (STJ26031)

GENERAL INFORMATION

Product Type	Primary antibodies
Applications	WB/ELISA
Host / Source	Rabbit
Reactivity	Human/Mouse/Rat

PRODUCT PROPERTIES

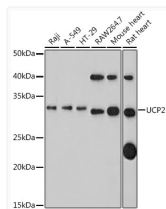
Clonality	Polyclonal
Concentration	Lot specific
Conjugation	Unconjugated
Purification	Affinity purification
Dilution Range	WB:1:500-1:1000 ELISA:Recommended starting concentration is 1 µg/mL. Please optimize the concentration based on your specific assay requirements.
Formulation	PBS with 0.09% Sodium Azide, 50% Glycerol, pH7.3.
Isotype	IgG
Molecular Weight	Protein Mw: 33kDa Observed Mw: 32kDa
Storage Instruction	Store at -20°C for up to 1 year from the date of receipt, and avoid repeat freeze-thaw cycles.

TARGET INFORMATION

Gene ID	7351
Gene Symbol	UCP2
UniProt ID	UCP2_HUMAN
Immunogen Region	112-211
Immunogen Sequence	EHASIGSRLLAGSTTGALAV AVAQPTDVVKVRFQAQARAG GGRRYQSTVNAYKTIAREEG FRGLWKGTSFNVARNAINVC AELVYDLIKDALLKANLMT
Specificity	Recombinant fusion protein containing a sequence corresponding to amino acids 112-211 of human UCP2 (NP_003346.2).

ADDITIONAL INFORMATION

Note STRICTLY FOR FURTHER SCIENTIFIC RESEARCH USE ONLY (RUO). MUST NOT TO BE USED IN DIAGNOSTIC OR THERAPEUTIC APPLICATIONS.



Western blot analysis of various lysates using UCP2 Rabbit polyclonal antibody (STJ26031) at 1:1000 dilution. Secondary antibody: HRP Goat Anti-Rabbit IgG (H+L) (STJS000856) at 1:10000 dilution. Lysates/proteins: 25 µg per lane. Blocking buffer: 3% nonfat dry milk in TBST. Detection: ECL Basic Kit. Exposure time: 180s.