

Anti-TYK2 antibody (1102-1182) (STJ26000)

GENERAL INFORMATION

Product Type	Primary antibodies
Applications	WB/IHC-P/IF/ICC/ELISA
Host / Source	Rabbit
Reactivity	Human/Mouse/Rat

PRODUCT PROPERTIES

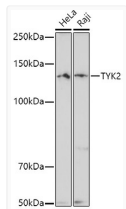
Clonality	Polyclonal
Concentration	Lot specific
Conjugation	Unconjugated
Purification	Affinity purification
Dilution Range	WB:1:100-1:500 IHC-P:1:50-1:200 IF/ICC:1:50-1:200 ELISA:Recommended starting concentration is 1 µg/mL. Please optimize the concentration based on your specific assay requirements.
Formulation	PBS with 0.05% Proclin300, 50% Glycerol, pH 7.3.
Isotype	IgG
Molecular Weight	Protein Mw: 134kDa Observed Mw: 134kDa
Storage Instruction	Store at -20°C for up to 1 year from the date of receipt, and avoid repeat freeze-thaw cycles.

TARGET INFORMATION

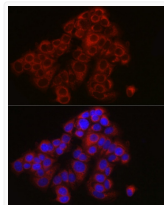
Gene ID	7297
Gene Symbol	TYK2
UniProt ID	TYK2_HUMAN
Immunogen Region	1102-1182
Immunogen Sequence	QSPPTKFLLEIGIAQGQMTV LRLTELLERGERLPRPKCP CEVYHLMKNCWETEASFRPT FENLIPILKTVHEKYQQGAP S
Specificity	Recombinant fusion protein containing a sequence corresponding to amino acids 1102-1182 of human TYK2 (NP_003322.3).

ADDITIONAL INFORMATION

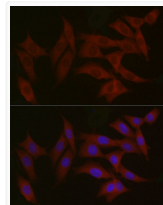
Note **STRICTLY FOR FURTHER SCIENTIFIC RESEARCH USE ONLY (RUO). MUST NOT TO BE USED IN DIAGNOSTIC OR THERAPEUTIC APPLICATIONS.**



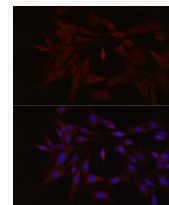
Western blot analysis of extracts of various cell lines, using TYK2 antibody (STJ26000) at 1:500 dilution. Secondary antibody: HRP Goat Anti-rabbit IgG (H+L) (STJS000856) at 1:10000 dilution. Lysates/proteins: 25 µg per lane. Blocking buffer: 3% non-fat dry milk in TBST. Detection: ECL Basic Kit. Exposure time: 180s.



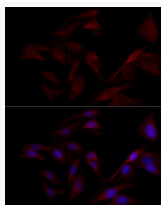
Immunofluorescence analysis of MCF7 cells using TYK2 rabbit polyclonal antibody (STJ26000) at dilution of 1:100 (40x lens). Blue: DAPI for nuclear staining.



Immunofluorescence analysis of NIH/3T3 cells using TYK2 rabbit polyclonal antibody (STJ26000) at dilution of 1:100 (40x lens). Blue: DAPI for nuclear staining.



Immunofluorescence analysis of PC-12 cells using TYK2 rabbit polyclonal antibody (STJ26000) at dilution of 1:100 (40x lens). Blue: DAPI for nuclear staining.



Immunofluorescence analysis of U2OS cells using TYK2 rabbit polyclonal antibody (STJ26000) at dilution of 1:100 (40x lens). Blue: DAPI for nuclear staining.