

Anti-TRIM21 antibody (86-334) (STJ25964)

GENERAL INFORMATION

Product Type	Primary antibodies
Applications	WB/IHC-P/IF/ICC/IP/ELISA
Host / Source	Rabbit
Reactivity	Human/Mouse/Rat

PRODUCT PROPERTIES

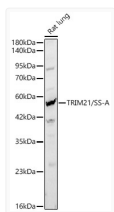
Clonality	Polyclonal
Concentration	Lot specific
Conjugation	Unconjugated
Purification	Affinity purification
Dilution Range	WB:1:500-1:1000 IHC-P:1:50-1:200 IF/ICC:1:50-1:200 IP:0.5 Mu g-4 Mu g antibody for 200 Mu g-400 Mu g extracts of whole cells ELISA:Recommended starting concentration is 1 Mu g/mL. Please optimize the concentration based on your specif
Formulation	PBS with 0.05% Proclin300, 50% Glycerol, pH7.3.
Isotype	IgG
Molecular Weight	Protein Mw: 54kDa Observed Mw: 50kDa//54kDa
Storage Instruction	Store at-20°C for up to 1 year from the date of receipt, and avoid repeat freeze-thaw cycles.

TARGET INFORMATION

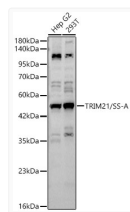
Gene ID	6737
Gene Symbol	TRIM21
UniProt ID	R052_HUMAN
Immunogen Region	86-334
Immunogen Sequence	GTQGERCAVHGERLHLFCEK DGKALCWVCAQSRKHRDHAM VPLEEAQAEYQEKLQVALGE LRRKQELAEKLEVEIAIKRA DWKKTIVETQKSRIHAEFVQQ KNFLVEEEQRQLQLEKDER EQLRILGEKEAKLAQQSQAL QELISELDRRCHSSALELLQ EVIIVLERSSESWNLKDLIDIT SPELRVSVCHVPLGLKMLRRTC AVHITLDPDTANPWLILSED RRQVRLGDTQQSIPGNEER
Specificity	Recombinant fusion protein containing a sequence corresponding to amino acids 86-334 of human TRIM21/SS-A (NP_003132.2).

ADDITIONAL INFORMATION

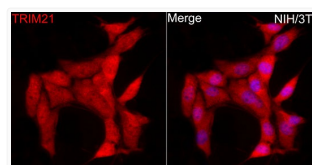
Note STRICTLY FOR FURTHER SCIENTIFIC RESEARCH USE ONLY (RUO). MUST NOT TO BE USED IN DIAGNOSTIC OR THERAPEUTIC APPLICATIONS.



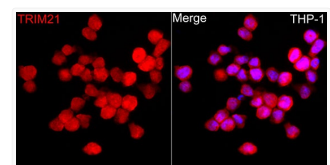
Western blot analysis of lysates from Rat lung using TRIM21/SS-A rabbit polyclonal antibody (STJ25964) at 1:1000 dilution. Secondary antibody:HRP Goat Anti-rabbit IgG (H+L) (STJS000856) at 1:10000 dilution. Lysates/proteins: 25 Mu g per lane. Blocking buffer: 3% non-fat dry milk in TBST. Detection:ECL Basic Kit. Exposure time:180s.



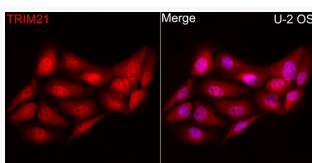
Western blot analysis of various lysates using TRIM21/SS-A rabbit polyclonal antibody (STJ25964) at 1:1000 dilution. Secondary antibody:HRP Goat Anti-rabbit IgG (H+L) (STJS000856) at 1:10000 dilution. Lysates/proteins: 25 Mu g per lane. Blocking buffer: 3% non-fat dry milk in TBST. Detection:ECL Basic Kit. Exposure time: 90s.



Immunofluorescence analysis of NIH/3T3 cells using TRIM21/SS-A rabbit polyclonal antibody (STJ25964) at dilution of 1:100 (40x lens). Secondary antibody: Cy3 Goat Anti-rabbit IgG (H+L) at 1:500 dilution. Blue: DAPI for nuclear staining.



Immunofluorescence analysis of THP-1 cells using TRIM21/SS-A rabbit polyclonal antibody (STJ25964) at dilution of 1:100 (40x lens). Secondary antibody: Cy3 Goat Anti-rabbit IgG (H+L) at 1:500 dilution. Blue: DAPI for nuclear staining.



Immunofluorescence analysis of U2OS cells using TRIM21/SS-A rabbit polyclonal antibody (STJ25964) at dilution of 1:100 (40x lens). Secondary antibody: Cy3 Goat Anti-rabbit IgG (H+L) at 1:500 dilution. Blue: DAPI for nuclear staining.