

Anti-TRAP1 antibody (445-704) (STJ25957)

GENERAL INFORMATION

Product Type	Primary antibodies
Applications	WB/IHC-P/IF/ICC/ELISA
Host / Source	Rabbit
Reactivity	Human/Mouse/Rat

PRODUCT PROPERTIES

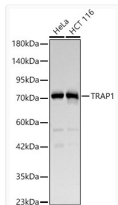
Clonality	Polyclonal
Concentration	Lot specific
Conjugation	Unconjugated
Purification	Affinity purification
Dilution Range	WB:1:500-1:2000 IHC-P:1:50-1:200 IF/ICC:1:50-1:200 ELISA:Recommended starting concentration is 1 µg/mL. Please optimize the concentration based on your specific assay requirements.
Formulation	PBS with 0.05% Proclin300, 50% Glycerol, pH 7.3.
Isotype	IgG
Molecular Weight	Protein Mw: 80kDa Observed Mw: 71kDa
Storage Instruction	Store at -20°C for up to 1 year from the date of receipt, and avoid repeat freeze-thaw cycles.

TARGET INFORMATION

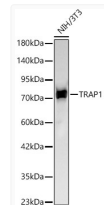
Gene ID	10131
Gene Symbol	TRAP1
UniProt ID	TRAP1_HUMAN
Immunogen Region	445-704
Immunogen Sequence	GLFMREGIVTATEQEVKEDI AKLLRYESSALPSGQLTSLSEYASRMFRAGTRNIYYLCAPN RHLAEHSPYYEAMKKKDTEV LFCFEQFDELTLHLREFDK KKLISVETDIVVDHYKEEKF EDRSPAAECLSEKETEELMA WMRNVLGSRVTNVKVTLRDL TPHPAMVTVLEMGAAARHFLRM QQLAKTQEERAQLLQPTLEI NPRHALIKKLNQLRASEPGL AQLLVDQIYENAMIAAGLV
Specificity	Recombinant fusion protein containing a sequence corresponding to amino acids 445-704 of human TRAP1 (NP_057376.2).

ADDITIONAL INFORMATION

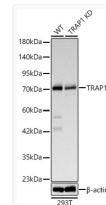
Note STRICTLY FOR FURTHER SCIENTIFIC RESEARCH USE ONLY (RUO). MUST NOT TO BE USED IN DIAGNOSTIC OR THERAPEUTIC APPLICATIONS.



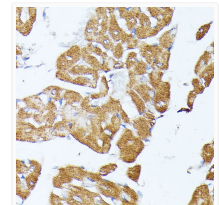
Western blot analysis of various lysates, using TRAP1 rabbit polyclonal antibody (STJ25957) at 1:800 dilution. Secondary antibody: HRP Goat Anti-rabbit IgG (H+L) (STJS000856) at 1:10000 dilution. Lysates/proteins: 25µg per lane. Blocking buffer: 3% non-fat dry milk in TBST. Detection: ECL Basic Kit. Exposure time: 5s.



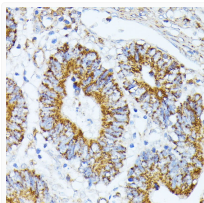
Western blot analysis of NIH/3T3, using TRAP1 rabbit polyclonal antibody (STJ25957) at 1:800 dilution. Secondary antibody: HRP Goat Anti-rabbit IgG (H+L) (STJS000856) at 1:10000 dilution. Lysates/proteins: 25µg per lane. Blocking buffer: 3% non-fat dry milk in TBST. Detection: ECL Basic Kit. Exposure time: 30s.



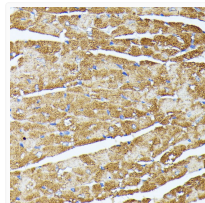
Western blot analysis of extracts from normal (control) and TRAP1 knockdown (KD) 293T (KD) cells, using TRAP1 rabbit polyclonal antibody (STJ25957) at dilution of 1:100 (40x lens). Secondary antibody: HRP Goat Anti-rabbit IgG (H+L) (STJS000856) at 1:10000 dilution. Lysates/proteins: 25µg per lane. Blocking buffer: 3% non-fat dry milk in TBST. Detection: ECL Basic Kit. Exposure time: 5s.



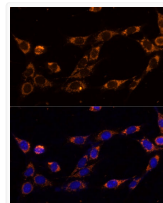
Immunohistochemistry analysis of paraffin-embedded rat heart using TRAP1 antibody (STJ25957) at dilution of 1:100 (40x lens). Perform microwave antigen retrieval with 10 mM PBS buffer pH 7. 2 before commencing with immunohistochemistry staining protocol.



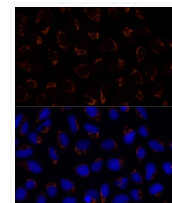
Immunohistochemistry analysis of paraffin-embedded human colon carcinoma using TRAP1 antibody (STJ25957) at dilution of 1:100 (40x lens). Perform microwave antigen retrieval with 10 mM PBS buffer pH 7. 2 before commencing with immunohistochemistry staining protocol.



Immunohistochemistry analysis of paraffin-embedded mouse heart using TRAP1 antibody (STJ25957) at dilution of 1:100 (40x lens). Perform microwave antigen retrieval with 10 mM PBS buffer pH 7. 2 before commencing with immunohistochemistry staining protocol.



Immunofluorescence analysis of NIH-3T3 cells using TRAP1 Polyclonal Antibody (STJ25957) at dilution of 1:100 (40x lens). Blue: DAPI for nuclear staining.



Immunofluorescence analysis of U-2 OS cells using TRAP1 Polyclonal Antibody (STJ25957) at dilution of 1:100 (40x lens). Blue: DAPI for nuclear staining.