

## Anti-TRAF7 antibody (380-479) (STJ25956)

### GENERAL INFORMATION

Product Type	Primary antibodies
Applications	WB/IHC-P/IF/ICC/ELISA
Host / Source	Rabbit
Reactivity	Human/Mouse/Rat

### PRODUCT PROPERTIES

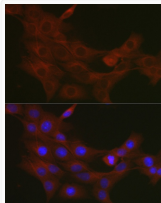
Clonality	Polyclonal
Concentration	Lot specific
Conjugation	Unconjugated
Purification	Affinity purification
Dilution Range	WB:1:500-1:1000 IHC-P:1:50-1:200 IF/CC:1:50-1:100 ELISA:Recommended starting concentration is 1 Mu g/mL. Please optimize the concentration based on your specific assay requirements.
Formulation	PBS with 0.05% Proclin300, 50% Glycerol, pH 7.3.
Isotype	IgG
Molecular Weight	Protein Mw: 75kDa Observed Mw: 67kDa
Storage Instruction	Store at -20°C for up to 1 year from the date of receipt, and avoid repeat freeze-thaw cycles.

### TARGET INFORMATION

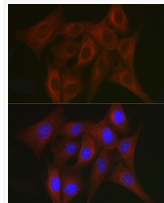
Gene ID	<a href="#">84231</a>
Gene Symbol	<a href="#">TRAF7</a>
UniProt ID	<a href="#">TRAF7_HUMAN</a>
Immunogen Region	380-479
Immunogen Sequence	YDPQIQFKCKGTFVGHQGPV WCLCVYSMGDLFLFSGSSDKT IKVWDTCTTYKCKQTLEGHD GIVLALCIQGCKLYSGSADC TIIWDIQNLQKQVNTIRAHD
Specificity	Recombinant fusion protein containing a sequence corresponding to amino acids 380-479 of human TRAF7 (NP_115647.2).

### ADDITIONAL INFORMATION

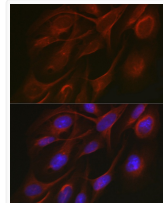
Note **STRICTLY FOR FURTHER SCIENTIFIC RESEARCH USE ONLY (RUO). MUST NOT TO BE USED IN DIAGNOSTIC OR THERAPEUTIC APPLICATIONS.**



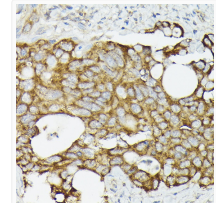
Immunofluorescence analysis of PC-12 cells using TRAF7 antibody (STJ25956) at dilution of 1:50. Blue: DAPI for nuclear staining.



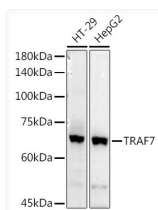
Immunofluorescence analysis of NIH/3T3 cells using TRAF7 antibody (STJ25956) at dilution of 1:50. Blue: DAPI for nuclear staining.



Immunofluorescence analysis of U2OS cells using TRAF7 antibody (STJ25956) at dilution of 1:50. Blue: DAPI for nuclear staining.



Immunohistochemistry analysis of paraffin-embedded human colon carcinoma using TRAF7 antibody (STJ25956) at dilution of 1:50 (40x lens). Perform high pressure antigen retrieval with 10 mM citrate buffer pH 6.0 before commencing with immunohistochemistry staining protocol.



Western blot analysis of extracts of various cell lines, using TRAF7 antibody (STJ25956) at 1:1000 dilution. Secondary antibody: HRP Goat Anti-Rabbit IgG (H+L) (STJS000856) at 1:10000 dilution. Lysates/proteins: 25 Mu g per lane. Blocking buffer: 3% nonfat dry milk in TBST. Detection: ECL Basic Kit. Exposure time: 180s.