

Anti-TP73 antibody (487-636) (STJ25933)

GENERAL INFORMATION

Product Type	Primary antibodies
Applications	WB/IHC-P/IF/ICC/ELISA
Host / Source	Rabbit
Reactivity	Human/Mouse

PRODUCT PROPERTIES

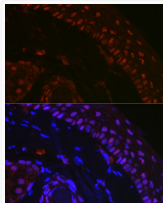
Clonality	Polyclonal
Concentration	Lot specific
Conjugation	Unconjugated
Purification	Affinity purification
Dilution Range	WB:1:500-1:2000 IHC-P:1:50-1:200 IF/CC:1:50-1:200 ELISA:Recommended starting concentration is 1 Mu g/mL. Please optimize the concentration based on your specific assay requirements.
Formulation	PBS with 0.01% Thimerosal, 50% Glycerol, pH 7.3.
Isotype	IgG
Molecular Weight	Protein Mw: 70kDa Observed Mw: 80kDa
Storage Instruction	Store at -20°C for up to 1 year from the date of receipt, and avoid repeat freeze-thaw cycles.

TARGET INFORMATION

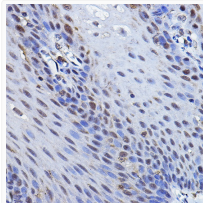
Gene ID	7161
Gene Symbol	TP73
UniProt ID	P73_HUMAN
Immunogen Region	487-636
Immunogen Sequence	YHADPSLVSFLTGLGCPNCI EYFTSQGLQSIYHLQNLTI E DLGALKIPEQYRMTIWRGLQ DLKQGHDYSTAQQLLRSSNA ATISIGGSGELQRQRVMEAV HFRVRRHTITIPNRGGPGGGP DEWADFGFDLPDCKARKQPI KEEFTEAEIH
Specificity	Recombinant fusion protein containing a sequence corresponding to amino acids 487-636 of human TP73 (NP_005418.1).

ADDITIONAL INFORMATION

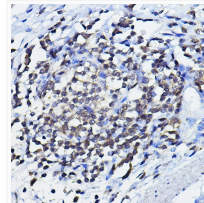
Note **STRICTLY FOR FURTHER SCIENTIFIC RESEARCH USE ONLY (RUO). MUST NOT TO BE USED IN DIAGNOSTIC OR THERAPEUTIC APPLICATIONS.**



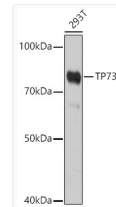
Immunofluorescence analysis of paraffin-embedded mouse skin using TP73 Rabbit polyclonal antibody (STJ25933) at dilution of 1:100 (40x lens). Secondary antibody: Cy3 Goat Anti-Rabbit IgG (H+L) at 1:500 dilution. Blue: DAPI for nuclear staining.



Immunohistochemistry analysis of TP73 in paraffin-embedded human esophageal using TP73 Rabbit polyclonal antibody (STJ25933) at dilution of 1:100 (40x lens). Perform high pressure antigen retrieval with 10 mM citrate buffer pH 6.0 before commencing with immunohistochemistry staining protocol.



Immunohistochemistry analysis of TP73 in paraffin-embedded human lymph node using TP73 Rabbit polyclonal antibody (STJ25933) at dilution of 1:100 (40x lens). Perform high pressure antigen retrieval with 10 mM citrate buffer pH 6.0 before commencing with immunohistochemistry staining protocol.



Western blot analysis of lysates from 293T cells, using TP73 Rabbit polyclonal antibody (STJ25933) at 1:1000 dilution. Secondary antibody: HRP Goat Anti-Rabbit IgG (H+L) (STJS000856) at 1:10000 dilution. Lysates/proteins: 25 Mu g per lane. Blocking buffer: 3% nonfat dry milk in TBST. Detection: ECL Basic Kit. Exposure time: 180s.