

Anti-TP63 antibody (166-362) (STJ25931)

GENERAL INFORMATION

Product Type	Primary antibodies
Applications	WB/IHC-P/IF/ICC/ELISA
Host / Source	Rabbit
Reactivity	Human/Mouse/Rat

PRODUCT PROPERTIES

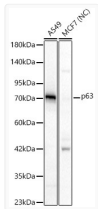
Clonality	Polyclonal
Concentration	Lot specific
Conjugation	Unconjugated
Purification	Affinity purification
Dilution Range	WB:1:500-1:2000 IHC-P:1:50-1:200 IF/ICC:1:50-1:200 ELISA:Recommended starting concentration is 1 µg/mL. Please optimize the concentration based on your specific assay requirements.
Formulation	PBS with 0.09% Sodium Azide, 50% Glycerol, pH 7.3.
Isotype	IgG
Molecular Weight	Protein Mw: 77kDa Observed Mw: 75kDa
Storage Instruction	Store at -20°C for up to 1 year from the date of receipt, and avoid repeat freeze-thaw cycles.

TARGET INFORMATION

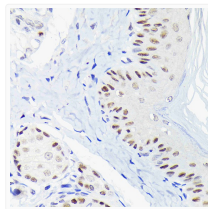
Gene ID	8626
Gene Symbol	TP63
UniProt ID	P63_HUMAN
Immunogen Region	166-362
Immunogen Sequence	PPSHLIRVEGNSHAQYVEDP ITGRQSVLVPYEPQVGFTEF TTVLYNFMCNSSCVGGMNRR PILIVTLETRDQQLGRRC FEARICACPGDRKADEDSI RKQQVSDSTKNGDGTKRPF QNTHQIMTSIKRRSPDDE LLYLPVVRGRETYEMLLKIKE SLELMQYLPQHTIETYRQQQ QQQHQLLQKQTSIQSP
Specificity	A synthetic peptide corresponding to a sequence within amino acids 166-362 of human p63 (NP_001108452.1).

ADDITIONAL INFORMATION

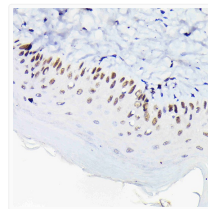
Note **STRICTLY FOR FURTHER SCIENTIFIC RESEARCH USE ONLY (RUO). MUST NOT TO BE USED IN DIAGNOSTIC OR THERAPEUTIC APPLICATIONS.**



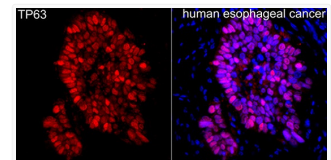
Western blot analysis of various lysates, using p63 rabbit polyclonal antibody (STJ25931) at 1:1000 dilution. Secondary antibody: HRP Goat Anti-rabbit IgG (H+L) (STJS000856) at 1:10000 dilution. Lysates/proteins: 25µg per lane. Blocking buffer: 3% non-fat dry milk in TBST. Detection: ECL Basic Kit. Negative control (NC): MCF7. Exposure time: 10s.



Immunohistochemistry analysis of paraffin-embedded rat skin using p63 rabbit polyclonal antibody (STJ25931) at dilution of 1:100 (40x lens). Perform microwave antigen retrieval with 10 mM Tris/EDTA buffer pH 9.0 before commencing with immunohistochemistry staining protocol.



Immunohistochemistry analysis of paraffin-embedded mouse skin using p63 rabbit polyclonal antibody (STJ25931) at dilution of 1:100 (40x lens). Perform microwave antigen retrieval with 10 mM Tris/EDTA buffer pH 9.0 before commencing with immunohistochemistry staining protocol.



Immunofluorescence analysis of human esophageal cancer using p63 rabbit polyclonal antibody (STJ25931) at dilution of 1:100 (40x lens). Secondary antibody: Cy3 Goat Anti-rabbit IgG (H+L) at 1:500 dilution. Blue: DAPI for nuclear staining.