

## Anti-TNNC1 antibody (1-160) (STJ25906)

### GENERAL INFORMATION

Product Type	Primary antibodies
Applications	WB/IF/ICC/ELISA
Host / Source	Rabbit
Reactivity	Mouse/Rat

### PRODUCT PROPERTIES

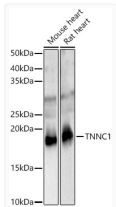
Clonality	Polyclonal
Concentration	Lot specific
Conjugation	Unconjugated
Purification	Affinity purification
Dilution Range	WB:1:1000-1:5000 IF/CC:1:50-1:200 ELISA:Recommended starting concentration is 1 $\mu$ g/mL. Please optimize the concentration based on your specific assay requirements.
Formulation	PBS with 0.02% Sodium Azide, 50% Glycerol, pH 7.3.
Isotype	IgG
Molecular Weight	Protein Mw: 18kDa Observed Mw: 18kDa
Storage Instruction	Store at -20°C for up to 1 year from the date of receipt, and avoid repeat freeze-thaw cycles.

### TARGET INFORMATION

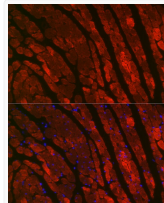
Gene ID	<a href="#">7134</a>
Gene Symbol	<a href="#">TNNC1</a>
UniProt ID	<a href="#">TNNC1_HUMAN</a>
Immunogen Region	1-160
Immunogen Sequence	MDDIYKAAVEQLTEEQKNEF KAAFDIFVLGAEDGCISTKE LGKVMRMLGONPTPEELQEM IDEVDEDGSGTVDFDEFLLVM MVRCKMDDSKGKSEELSDL FRMFDKNADGYIDLDELKIM LQATGETITEDDIEELMKDG DKNNDGRIDYDEFLEFMKGV
Specificity	Recombinant fusion protein containing a sequence corresponding to amino acids 1-160 of human TNNC1 (NP_003271.1).

### ADDITIONAL INFORMATION

Note **STRICTLY FOR FURTHER SCIENTIFIC RESEARCH USE ONLY (RUO). MUST NOT TO BE USED IN DIAGNOSTIC OR THERAPEUTIC APPLICATIONS.**



Western blot analysis of various lysates, using TNNC1 rabbit polyclonal antibody (STJ25906) at 1:2000 dilution. Secondary antibody: HRP Goat Anti-rabbit IgG (H+L) (STJS000856) at 1:10000 dilution. Lysates/proteins: 25  $\mu$ g per lane. Blocking buffer: 3% non-fat dry milk in TBST. Detection: ECL Basic Kit. Exposure time: 10s.



Immunofluorescence analysis of rat heart cells using TNNC1 rabbit polyclonal antibody (STJ25906) at dilution of 1:100 (40x lens). Blue: DAPI for nuclear staining.