

## Anti-TMEM173 antibody (170-379) (STJ25875)

### GENERAL INFORMATION

Product Type	Primary antibodies
Applications	WB/IHC-P/IF/ICC/IP/ELISA
Host / Source	Rabbit
Reactivity	Human/Mouse/Rat

### PRODUCT PROPERTIES

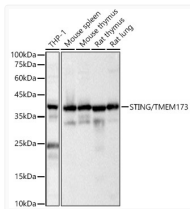
Clonality	Polyclonal
Concentration	Lot specific
Conjugation	Unconjugated
Purification	Affinity purification
Dilution Range	WB:1:100-1:500 IHC-P:1:50-1:200 IF/CC:1:50-1:200 IP:0.5 Mu g-4 Mu g antibody for 200 Mu g-400 Mu g extracts of whole cells ELISA:Recommended starting concentration is 1 Mu g/mL. Please optimize the concentration based on your specific
Formulation	PBS with 0.09% Sodium Azide, 50% Glycerol, pH7.3.
Isotype	IgG
Molecular Weight	Protein Mw: 42kDa Observed Mw: 40kDa
Storage Instruction	Store at -20°C for up to 1 year from the date of receipt, and avoid repeat freeze-thaw cycles.

### TARGET INFORMATION

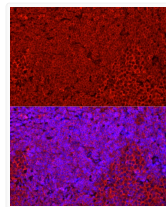
Gene ID	<a href="#">340061</a>
Gene Symbol	<a href="#">STING1</a>
UniProt ID	<a href="#">STING_HUMAN</a>
Immunogen Region	170-379
Immunogen Sequence	LAPAEISAVCEKGNFVAHG LAWSYYIGYLRLLPELQAR IRTYNOHYNNLLRGAVSQRL YILLPLDCGVDPNLSMADPN IRFLDKLPQQTGDHAGIKDR VYSNSIYELLENGQRAGTCV LEYATPLQTLFAMSQYSQAG FSREDRLAQKLFRCRTLEDI LADAPESQNNCRLIA YQEPA DSSFSLSQEVLRHLRQEEK EEVTVGSLKTSVAVPSTSTMS QEPPELLISGMEKPLPLRTD
Specificity	Recombinant fusion protein containing a sequence corresponding to amino acids 139-379 of human STING/TMEM173 (NP_938023.1).

### ADDITIONAL INFORMATION

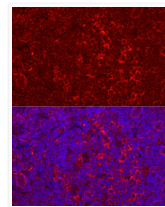
Note STRICTLY FOR FURTHER SCIENTIFIC RESEARCH USE ONLY (RUO). MUST NOT TO BE USED IN DIAGNOSTIC OR THERAPEUTIC APPLICATIONS.



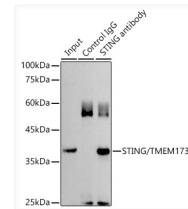
Western blot analysis of various lysates, using STING/TMEM173 Rabbit pAb (STJ25875) at 1:400 dilution.  
Secondary antibody: HRP-conjugated Goat anti-Rabbit IgG (H+L) (STJS000856) at 1:10000 dilution.  
Lysates/proteins: 25 Mu g per lane.  
Blocking buffer: 3% nonfat dry milk in TBST.  
Detection: ECL Basic Kit  
Exposure time: 1s.



Immunofluorescence analysis of paraffin-embedded mouse spleen using STING/TMEM173 Rabbit pAb (STJ25875) at dilution of 1:50 (40x lens). Secondary antibody: Cy3-conjugated Goat anti-Rabbit IgG (H+L) (STJS001166) at 1:500 dilution. Blue: DAPI for nuclear staining. Perform high pressure antigen retrieval with 0.01 M citrate buffer (pH 6.0) prior to IF staining.



Immunofluorescence analysis of paraffin-embedded rat spleen using STING/TMEM173 Rabbit pAb (STJ25875) at dilution of 1:50 (40x lens). Secondary antibody: Cy3-conjugated Goat anti-Rabbit IgG (H+L) (STJS001166) at 1:500 dilution. Blue: DAPI for nuclear staining. Perform high pressure antigen retrieval with 0.01 M citrate buffer (pH 6.0) prior to IF staining.



Immunoprecipitation analysis of 300 Mu g extracts of HT-29 cells using 3 Mu g STING/TMEM173 antibody (STJ25875). Western blot was performed from the immunoprecipitate using STING/TMEM173 antibody (STJ25875) at a dilution of 1:500.