

Anti-TLR7 antibody (30-1049) (STJ25871)

GENERAL INFORMATION

Product Type	Primary antibodies
Applications	WB/IF/ICC/ELISA
Host / Source	Rabbit
Reactivity	Human/Mouse/Rat

PRODUCT PROPERTIES

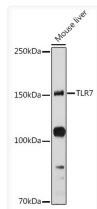
Clonality	Polyclonal
Concentration	Lot specific
Conjugation	Unconjugated
Purification	Affinity purification
Dilution Range	WB:1:500-1:1000 IF/CC:1:50-1:200 ELISA:Recommended starting concentration is 1 µg/mL. Please optimize the concentration based on your specific assay requirements.
Formulation	PBS with 0.02% Sodium Azide, 50% Glycerol, pH 7.3.
Isotype	IgG
Molecular Weight	Protein Mw: 121kDa Observed Mw: 150kDa
Storage Instruction	Store at -20°C for up to 1 year from the date of receipt, and avoid repeat freeze-thaw cycles.

TARGET INFORMATION

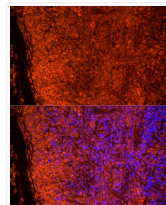
Gene ID	51284
Gene Symbol	TLR7
UniProt ID	TLR7_HUMAN
Immunogen Region	30-1049
Immunogen Sequence	FPKTLPCDVTLDVDPKNHVIV DCTDKHLTEIPGGIPTNTTN LTLTINHIPDISPASFHRLD HLVEIDFRNCVPIPLGSKN NMCIKRLQIKPRSFSGLTYL KSLYLDGNQLLEIPQGLPPS LQLLSLEANNIFSIRKENLT ELANIEILYLGQNCYYRNP YVSYSIEKDAFLNLTCLKVL SLKDNNTAVPTVLPSTLTE L
Specificity	Recombinant fusion protein containing a sequence corresponding to amino acids 30-230 of human TLR7 (NP_057646.1).

ADDITIONAL INFORMATION

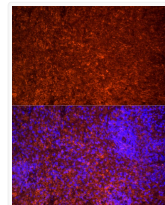
Note STRICTLY FOR FURTHER SCIENTIFIC RESEARCH USE ONLY (RUO). MUST NOT TO BE USED IN DIAGNOSTIC OR THERAPEUTIC APPLICATIONS.



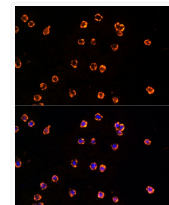
Western blot analysis of extracts of mouse liver, using TLR7 antibody (STJ25871) at 1:1000 dilution. Secondary antibody: HRP Goat Anti-rabbit IgG (H+L) (STJS000856) at 1:10000 dilution. Lysates/proteins: 25 µg per lane. Blocking buffer: 3% non-fat dry milk in TBST. Detection: ECL Basic Kit. Exposure time: 90s.



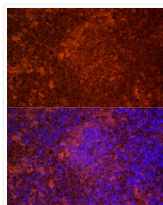
Immunofluorescence analysis of mouse spleen cells using TLR7 rabbit polyclonal antibody (STJ25871) at dilution of 1:20 (40x lens). Blue: DAPI for nuclear staining.



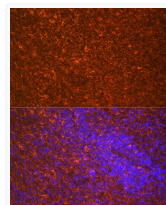
Immunofluorescence analysis of rat spleen cells using TLR7 rabbit polyclonal antibody (STJ25871) at dilution of 1:20 (40x lens). Blue: DAPI for nuclear staining.



Immunofluorescence analysis of THP-1 cells using TLR7 rabbit polyclonal antibody (STJ25871) at dilution of 1:20 (40x lens). Blue: DAPI for nuclear staining.



Immunofluorescence analysis of mouse spleen cells using TLR7 rabbit polyclonal antibody (STJ25871) at dilution of 1:100 (40x lens). Blue: DAPI for nuclear staining.



Immunofluorescence analysis of rat spleen cells using TLR7 rabbit polyclonal antibody (STJ25871) at dilution of 1:100 (40x lens). Blue: DAPI for nuclear staining.