

Anti-TJP1 antibody (18-1748) (STJ25857)

GENERAL INFORMATION

Product Type	Primary antibodies
Applications	WB/IF/ICC/ELISA
Host / Source	Rabbit
Reactivity	Human/Mouse/Rat

PRODUCT PROPERTIES

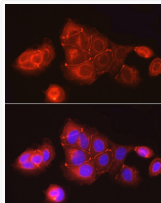
Clonality	Polyclonal
Concentration	Lot specific
Conjugation	Unconjugated
Purification	Affinity purification
Dilution Range	WB:1:2500-1:5000 IF/CC:1:50-1:200 ELISA:Recommended starting concentration is 1 μ g/mL. Please optimize the concentration based on your specific assay requirements.
Formulation	PBS with 0.09% Sodium Azide, 50% Glycerol, pH7.3.
Isotype	IgG
Molecular Weight	Protein Mw: 195kDa Observed Mw: 250kDa
Storage Instruction	Store at -20°C for up to 1 year from the date of receipt, and avoid repeat freeze-thaw cycles.

TARGET INFORMATION

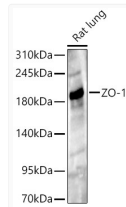
Gene ID	7082
Gene Symbol	TJP1
UniProt ID	ZO1_HUMAN
Immunogen Region	18-1748
Immunogen Sequence	IWEQHTVTLHRAPGFGFGIA ISGGRDNPHFQSGETSIVIS DVLKGGPAEGQLQENDRVAM VNGVSMDNVEHAFVQQLRK SGKNAKITIRKQVQIPVS RPDPEPVSDNEEDSYDEEIH DPRSGRSGVVNRRSEKIWPR DRASRERSLSRSDRRSVA SSQPAKPTKVTLVKSRKNEE YGLRLASHIFVKEISQDSL ARDGNIQEGDVVLKINGTVT ENMSLDAKTLIERSKGKL
Specificity	Recombinant fusion protein containing a sequence corresponding to amino acids 18-273 of human TJP1 (NP_003248.3).

ADDITIONAL INFORMATION

Note **STRICTLY FOR FURTHER SCIENTIFIC RESEARCH USE ONLY (RUO). MUST NOT TO BE USED IN DIAGNOSTIC OR THERAPEUTIC APPLICATIONS.**



Immunofluorescence analysis of MCF7 cells using ZO-1 Rabbit polyclonal antibody (STJ25857) at dilution of 1:100 (40x lens). Secondary antibody: Cy3 Goat Anti-Rabbit IgG (H+L) at 1:500 dilution. Blue: DAPI for nuclear staining.



Western blot analysis of lysates from Rat lung, using ZO-1 Rabbit polyclonal antibody (STJ25857) at 1:400 dilution. Secondary antibody: HRP Goat Anti-Rabbit IgG (H+L) (STJS000856) at 1:10000 dilution. Lysates/proteins: 25ug per lane. Blocking buffer: 3% nonfat dry milk in TBST. Detection: ECL Enhanced Kit. Exposure time: 45s.