

Anti-THBD antibody (19-575) (STJ25842)

GENERAL INFORMATION

Product Type	Primary antibodies
Applications	WB/IHC-P/IF/ICC/ELISA
Host / Source	Rabbit
Reactivity	Human/Mouse/Rat

PRODUCT PROPERTIES

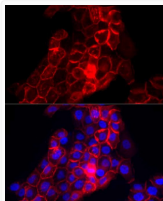
Clonality	Polyclonal
Concentration	Lot specific
Conjugation	Unconjugated
Purification	Affinity purification
Dilution Range	WB:1:500-1:1000 IHC-P:1:50-1:200 IF/ICC:1:50-1:200 ELISA:Recommended starting concentration is 1 μ g/mL. Please optimize the concentration based on your specific assay requirements.
Formulation	PBS with 0.09% Sodium Azide, 50% Glycerol, pH7.3.
Isotype	IgG
Molecular Weight	Protein Mw: 60kDa Observed Mw: 110kDa
Storage Instruction	Store at -20°C for up to 1 year from the date of receipt, and avoid repeat freeze-thaw cycles.

TARGET INFORMATION

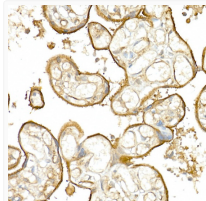
Gene ID	7056
Gene Symbol	THBD
UniProt ID	TRBM_HUMAN
Immunogen Region	19-575
Immunogen Sequence	APAEPQPGGSQCVEHDCFAL YPGPATFLNASQICDGLRGH LMTVRSSVAADVISLLLLNGD GGVGRRLWIGLQLPPGCGD PKRLGPLRGFQWVTGDNNTS YSRWARLDLNGAPLCGPLCV AVSAAEATVPSEPIWEEQQC EVKADGFLCEHFHPATCRPL AVEPGAAAAAASITYGTPFA ARGADFAQALPVGSSAAVAPL GLQLMCTAPPQAVQGHWARE APGAWDCSVENGGCEHACN
Specificity	Recombinant fusion protein containing a sequence corresponding to amino acids 19-515 of human CD141/Thrombomodulin (NP_000352.1).

ADDITIONAL INFORMATION

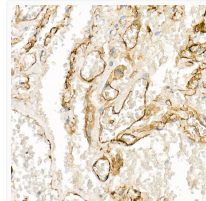
Note STRICTLY FOR FURTHER SCIENTIFIC RESEARCH USE ONLY (RUO). MUST NOT TO BE USED IN DIAGNOSTIC OR THERAPEUTIC APPLICATIONS.



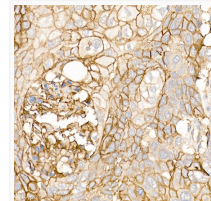
Immunofluorescence analysis of A-431 cells using CD141/Thrombomodulin Rabbit polyclonal antibody (STJ25842) at dilution of 1:100 (40x lens). Blue: DAPI for nuclear staining.



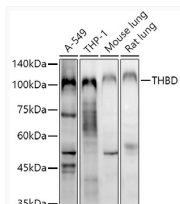
Immunohistochemistry analysis of paraffin-embedded human placenta using CD141/Thrombomodulin Rabbit polyclonal antibody (STJ25842) at dilution of 1:20 (40x lens). Perform high pressure antigen retrieval with 10 mM citrate buffer pH 6. 0 before commencing with immunohistochemistry staining protocol.



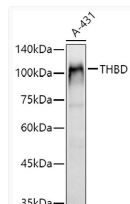
Immunohistochemistry analysis of paraffin-embedded human lung using CD141/Thrombomodulin Rabbit polyclonal antibody (STJ25842) at dilution of 1:20 (40x lens). Perform high pressure antigen retrieval with 10 mM citrate buffer pH 6. 0 before commencing with immunohistochemistry staining protocol.



Immunohistochemistry analysis of paraffin-embedded human lung squamous carcinoma tissue using CD141/Thrombomodulin Rabbit polyclonal antibody (STJ25842) at dilution of 1:20 (40x lens). Perform high pressure antigen retrieval with 10 mM citrate buffer pH 6. 0 before commencing with immunohistochemistry staining protocol.



Western blot analysis of extracts of various cell lines, using CD141/Thrombomodulin antibody (STJ25842) at 1:1000 dilution. Secondary antibody: HRP Goat Anti-Rabbit IgG (H+L) (STJS000856) at 1:10000 dilution. Lysates/proteins: 25 μ g per lane. Blocking buffer: 3% nonfat dry milk in TBST. Detection: ECL Basic Kit. Exposure time: 90s.



Western blot analysis of extracts of A-431 cells, using CD141/Thrombomodulin antibody (STJ25842) at 1:1000 dilution. Secondary antibody: HRP Goat Anti-Rabbit IgG (H+L) (STJS000856) at 1:10000 dilution. Lysates/proteins: 25 μ g per lane. Blocking buffer: 3% nonfat dry milk in TBST. Detection: ECL Basic Kit. Exposure time: 10s.