

Anti-TBX21 antibody (322-535) (STJ25786)

GENERAL INFORMATION

Product Type	Primary antibodies
Applications	WB/ELISA
Host / Source	Rabbit
Reactivity	Human/Mouse/Rat

PRODUCT PROPERTIES

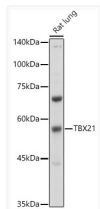
Clonality	Polyclonal
Concentration	Lot specific
Conjugation	Unconjugated
Purification	Affinity purification
Dilution Range	WB:1:100-1:500 ELISA:Recommended starting concentration is 1 µg/mL. Please optimize the concentration based on your specific assay requirements.
Formulation	PBS with 0.05% Proclin300, 50% Glycerol, pH 7.3.
Isotype	IgG
Molecular Weight	Protein Mw: 58kDa Observed Mw: 58kDa
Storage Instruction	Store at -20°C for up to 1 year from the date of receipt, and avoid repeat freeze-thaw cycles.

TARGET INFORMATION

Gene ID	30009
Gene Symbol	TBX21
UniProt ID	TBX21_HUMAN
Immunogen Region	322-535
Immunogen Sequence	KGFRNFESMYTSVDTIPS PPGPNCQFLGGDHYSPLLPN QYPVPSRFYFDLPQGAQDVV PQAYWLGAPRDHSYEAFFRA VSMKPAFLPSAPGPTMSYYR GQEVLPAGAGWPVAPQYPPK MGPASWFRPMTLPMEPGPG GSEGRGPEQGPPLVWTEIA PIRPSSSDSGLGEGDSKRRR VSPYPSSGDSSSPAGAPSPF DKEAEGQFYNYFPN
Specificity	Recombinant fusion protein containing a sequence corresponding to amino acids 322-535 of human TBX21 (NP_037483.1).

ADDITIONAL INFORMATION

Note **STRICTLY FOR FURTHER SCIENTIFIC RESEARCH USE ONLY (RUO). MUST NOT TO BE USED IN DIAGNOSTIC OR THERAPEUTIC APPLICATIONS.**



Western blot analysis of lysates from Rat lung, using TBX21 Rabbit pAb (STJ25786) at 1:500 dilution.

Secondary antibody: HRP-conjugated Goat anti-Rabbit IgG (H+L) (STJS000856) at 1:10000 dilution.

Lysates/proteins: 25 µg per lane.

Blocking buffer: 3% nonfat dry milk in TBST.

Detection: ECL Basic Kit

Exposure time: 30s.