

## Anti-TAP2 antibody (450-686) (STJ25775)

### GENERAL INFORMATION

Product Type	Primary antibodies
Applications	WB/IHC-P/IF/ICC/ELISA
Host / Source	Rabbit
Reactivity	Human/Mouse/Rat

### PRODUCT PROPERTIES

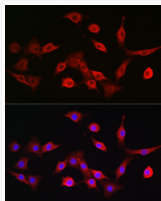
Clonality	Polyclonal
Concentration	Lot specific
Conjugation	Unconjugated
Purification	Affinity purification
Dilution Range	WB:1:500-1:1000 IHC-P:1:50-1:200 IF/ICC:1:50-1:200 ELISA:Recommended starting concentration is 1 Mu g/mL. Please optimize the concentration based on your specific assay requirements.
Formulation	PBS with 0.09% Sodium Azide, 50% Glycerol, pH7.3.
Isotype	IgG
Molecular Weight	Protein Mw: 76kDa Observed Mw: 75kDa
Storage Instruction	Store at -20°C for up to 1 year from the date of receipt, and avoid repeat freeze-thaw cycles.

### TARGET INFORMATION

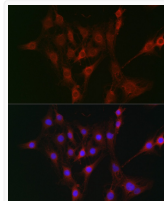
Gene ID	<a href="#">6891</a>
Gene Symbol	<a href="#">TAP2</a>
UniProt ID	<a href="#">TAP2_HUMAN</a>
Immunogen Region	450-686
Immunogen Sequence	QPNLPSPGTLAPTTLQGQVVK FQDVSFAYPNRPDRPVLKGL TFTLRPGEVTALVGPNGSGK STVAALLQNLQYPTGGQVLL DEKPISQYEHCHYLHSQVVSV GQEPVLFSGSVRNNIAYGLQ SCEDDKVMAAAQAHAHDDFI QEMEHGIYTDVGEKGSQALAA GQKQRLAIARALVRDPPVLI LDEATSALDVQCEQALQDWN SRGDRTVLVIAHRLQTVQRA HQILVLQEGKLGKLAQL
Specificity	Recombinant fusion protein containing a sequence corresponding to amino acids 450-686 of human TAP2 (NP_001276972.1).

### ADDITIONAL INFORMATION

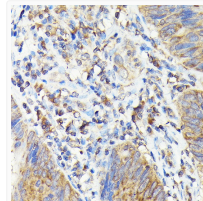
Note **STRICTLY FOR FURTHER SCIENTIFIC RESEARCH USE ONLY (RUO). MUST NOT TO BE USED IN DIAGNOSTIC OR THERAPEUTIC APPLICATIONS.**



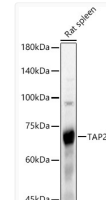
Immunofluorescence analysis of NIH/3T3 cells using TAP2 Rabbit polyclonal antibody (STJ25775) at dilution of 1:100 (40x lens). Blue: DAPI for nuclear staining.



Immunofluorescence analysis of C6 cells using TAP2 Rabbit polyclonal antibody (STJ25775) at dilution of 1:100 (40x lens). Blue: DAPI for nuclear staining.



Immunohistochemistry analysis of paraffin-embedded human colon carcinoma using TAP2 Rabbit polyclonal antibody (STJ25775) at dilution of 1:100 (40x lens). Perform high pressure antigen retrieval with 10 mM citrate buffer pH 6.0 before commencing with immunohistochemistry staining protocol.



Western blot analysis of Rat spleen, using TAP2 Rabbit polyclonal antibody (STJ25775) at 1:500 dilution. Secondary antibody: HRP Goat Anti-Rabbit IgG (H+L) (STJS000856) at 1:10000 dilution. Lysates/proteins: 25 Mu g per lane. Blocking buffer: 3% nonfat dry milk in TBST. Detection: ECL Basic Kit. Exposure time: 10s.