

## Anti-SYK antibody (250-350) (STJ25758)

### GENERAL INFORMATION

Product Type	Primary antibodies
Applications	WB/IF/ICC/ELISA
Host / Source	Rabbit
Reactivity	Human/Mouse/Rat

### PRODUCT PROPERTIES

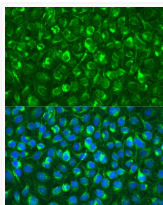
Clonality	Polyclonal
Concentration	Lot specific
Conjugation	Unconjugated
Purification	Affinity purification
Dilution Range	WB:1:500-1:2000 IF/CC:1:50-1:200 ELISA:Recommended starting concentration is 1 $\mu$ g/mL. Please optimize the concentration based on your specific assay requirements.
Formulation	PBS with 0.05% Proclin300, 50% Glycerol, pH7.3.
Isotype	IgG
Molecular Weight	Protein Mw: 72kDa Observed Mw: 72kDa
Storage Instruction	Store at -20°C for up to 1 year from the date of receipt, and avoid repeat freeze-thaw cycles.

### TARGET INFORMATION

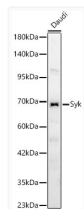
Gene ID	<a href="#">6850</a>
Gene Symbol	<a href="#">SYK</a>
UniProt ID	<a href="#">KSYK_HUMAN</a>
Immunogen Region	250-350
Immunogen Sequence	GLLRVLTVPCQKIGTQGNVN FGGRPQLPGSHPASSPAQGN RQUESTVSFNPYEPELAPWAA DKGPQREALPMDTEVYESPY ADPEEIRPKVEVYLDKLLTL E
Specificity	A synthetic peptide corresponding to a sequence within amino acids 250-350 of human Syk (NP_001128524.1).

### ADDITIONAL INFORMATION

Note **STRICTLY FOR FURTHER SCIENTIFIC RESEARCH USE ONLY (RUO). MUST NOT TO BE USED IN DIAGNOSTIC OR THERAPEUTIC APPLICATIONS.**



Immunofluorescence analysis of U2OS using Syk antibody (STJ25758) at dilution of 1:100 (40x lens). Blue: DAPI for nuclear staining.



Western blot analysis of Daudi, using Syk Rabbit polyclonal antibody (STJ25758) at 1:2000 dilution. Secondary antibody: HRP Goat Anti-Rabbit IgG (H+L) (STJS000856) at 1:10000 dilution. Lysates/proteins: 25 $\mu$ g per lane. Blocking buffer: 3% nonfat dry milk in TBST. Detection: ECL Basic Kit. Exposure time: 30s.