

Anti-SUMO2 antibody (1-95) (STJ25749)

GENERAL INFORMATION

Product Type	Primary antibodies
Applications	WB/ELISA
Host / Source	Rabbit
Reactivity	Human/Mouse/Rat

PRODUCT PROPERTIES

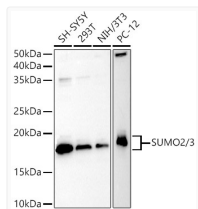
Clonality	Polyclonal
Concentration	Lot specific
Conjugation	Unconjugated
Purification	Affinity purification
Dilution Range	WB:1:100-1:500 ELISA:Recommended starting concentration is 1 Mu g/mL. Please optimize the concentration based on your specific assay requirements.
Formulation	PBS with 0.09% Sodium Azide, 50% Glycerol, pH7.3.
Isotype	IgG
Molecular Weight	Protein Mw: 11kDa Observed Mw: 11-20kDa
Storage Instruction	Store at -20°C for up to 1 year from the date of receipt, and avoid repeat freeze-thaw cycles.

TARGET INFORMATION

Gene ID	6613
Gene Symbol	SUMO2
UniProt ID	SUMO2_HUMAN
Immunogen Region	1-95
Immunogen Sequence	MADEKPKEGVKTENNNDHINL KVAGQDGSVVQFKIKRHPTL SKLMKAYCERQGLSMRQIRF RFDGQPINETDTPAQLMED EDTIDVFQQQTGGVY
Specificity	Recombinant fusion protein containing a sequence corresponding to amino acids 1-95 of human SUMO2/3 (NP_008868.3).

ADDITIONAL INFORMATION

Note STRICTLY FOR FURTHER SCIENTIFIC RESEARCH USE ONLY (RUO). MUST NOT TO BE USED IN DIAGNOSTIC OR THERAPEUTIC APPLICATIONS.



Western blot analysis of various lysates using SUMO2/3 Rabbit polyclonal antibody (STJ25749) at 1:500 dilution. Secondary antibody: HRP Goat Anti-Rabbit IgG (H+L) (STJS000856) at 1:10000 dilution. Lysates/proteins: 25 Mu g per lane. Blocking buffer: 3% nonfat dry milk in TBST. Detection: ECL Basic Kit. Exposure time: 180s.