

Anti-STK11 antibody (134-433) (STJ25732)

GENERAL INFORMATION

Product Type	Primary antibodies
Applications	WB/IHC-P/IF/ICC/ELISA
Host / Source	Rabbit
Reactivity	Human/Mouse/Rat

PRODUCT PROPERTIES

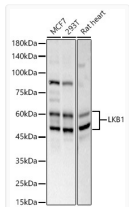
Clonality	Polyclonal
Concentration	Lot specific
Conjugation	Unconjugated
Purification	Affinity purification
Dilution Range	WB:1:500-1:1000 IHC-P:1:50-1:200 IF/CC:1:50-1:200 ELISA:Recommended starting concentration is 1 µg/mL. Please optimize the concentration based on your specific assay requirements.
Formulation	PBS with 0.02% Sodium Azide, 50% Glycerol, pH 7.3.
Isotype	IgG
Molecular Weight	Protein Mw: 49kDa Observed Mw: 49-60kDa
Storage Instruction	Store at -20°C for up to 1 year from the date of receipt, and avoid repeat freeze-thaw cycles.

TARGET INFORMATION

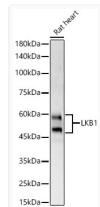
Gene ID	6794
Gene Symbol	STK11
UniProt ID	STK11_HUMAN
Immunogen Region	134-433
Immunogen Sequence	CGMQEMLDSVPEKRFPVCQA HGYFCQLIDGLEYLHSQGIV HKDIKPGNLLLTGGTLKIS DLGVAEALHPFAADDCRTS QGSPAFQPPEIANGLDTFSG FKVDIWSAGVTLYNITGGLY PFECDNIYKLFENIGKGSYA IPGDCGPPLSDLLKGMLEYE PAKRFSIRQIRQHSWFRKKH PPAEAPVPIPPSPDTPDKDRWR SMTVVPYLEDLHGAEDEDL FDIEDDIYTDQFTVPGQV
Specificity	Recombinant fusion protein containing a sequence corresponding to amino acids 134-433 of human LKB1 (NP_000446.1).

ADDITIONAL INFORMATION

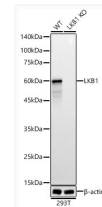
Note STRICTLY FOR FURTHER SCIENTIFIC RESEARCH USE ONLY (RUO). MUST NOT TO BE USED IN DIAGNOSTIC OR THERAPEUTIC APPLICATIONS.



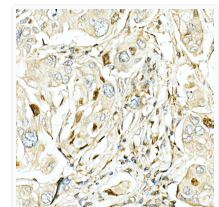
Western blot analysis of various lysates, using LKB1 antibody (STJ25732) at 1:600 dilution. Secondary antibody: HRP Goat Anti-rabbit IgG (H+L) (STJS000856) at 1:10000 dilution. Lysates/proteins: 25 µg per lane. Blocking buffer: 3% non-fat dry milk in TBST. Detection: ECL Basic Kit. Exposure time: 30s.



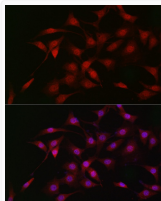
Western blot analysis of mouse heart, using LKB1 antibody (STJ25732) at 1:600 dilution. Secondary antibody: HRP Goat Anti-rabbit IgG (H+L) (STJS000856) at 1:10000 dilution. Lysates/proteins: 25 µg per lane. Blocking buffer: 3% non-fat dry milk in TBST. Detection: ECL Basic Kit. Exposure time: 30s.



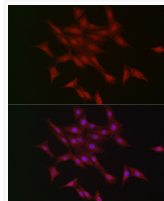
Western blot analysis of various lysates, using [KO Validated] LKB1 rabbit polyclonal antibody (STJ25732) at 1:7000 dilution. Secondary antibody: HRP Goat Anti-rabbit IgG (H+L) (STJS000856) at 1:10000 dilution. Lysates/proteins: 25 µg per lane. Blocking buffer: 3% non-fat dry milk in TBST. Detection: ECL Basic Kit. Exposure time: 60s.



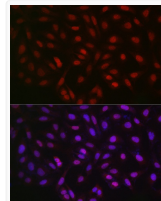
Immunohistochemistry analysis of paraffin-embedded human lung cancer using LKB1 rabbit polyclonal antibody (STJ25732) at dilution of 1:50 (40x lens). Perform high pressure antigen retrieval with 10 mM citrate buffer pH 6.0 before commencing with immunohistochemistry staining protocol.



Immunofluorescence analysis of NIH/3T3 cells using LKB1 rabbit polyclonal antibody (STJ25732) at dilution of 1:50 (40x lens). Blue: DAPI for nuclear staining.



Immunofluorescence analysis of PC-12 cells using LKB1 rabbit polyclonal antibody (STJ25732) at dilution of 1:50 (40x lens). Blue: DAPI for nuclear staining.



Immunofluorescence analysis of U2OS cells using LKB1 rabbit polyclonal antibody (STJ25732) at dilution of 1:50 (40x lens). Blue: DAPI for nuclear staining.