

Anti-STEAP3 antibody (1-180) (STJ25729)

GENERAL INFORMATION

Product Type	Primary antibodies
Applications	WB/ELISA
Host / Source	Rabbit
Reactivity	Human/Mouse

PRODUCT PROPERTIES

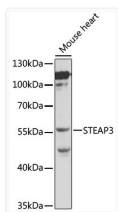
Clonality	Polyclonal
Concentration	Lot specific
Conjugation	Unconjugated
Purification	Affinity purification
Dilution Range	WB:1:500-1:2000 ELISA:Recommended starting concentration is 1 µg/mL. Please optimize the concentration based on your specific assay requirements.
Formulation	PBS with 0.02% Sodium Azide, 50% Glycerol, pH 7.3.
Isotype	IgG
Molecular Weight	Protein Mw: 55kDa Observed Mw: 55kDa
Storage Instruction	Store at -20°C for up to 1 year from the date of receipt, and avoid repeat freeze-thaw cycles.

TARGET INFORMATION

Gene ID	55240
Gene Symbol	STEAP3
UniProt ID	STE3_HUMAN
Immunogen Region	1-180
Immunogen Sequence	MPEEMDKPLISLHLVSDSS LAKVPDEAPKVGILGSGDFA RSLATRLVGSFGKVVVGSRN PKRTARLFPSAAQVTFQEEA VSSPEVIFVAVFREHYSSLC SLSDQLAGKILVDVSNPTEQ EHLQHRESNAEYLASLFPTC TVVKAFNVISAWTLQAGPRD GNRQVPICGDQPEAKRAVSE
Specificity	Recombinant fusion protein containing a sequence corresponding to amino acids 1-180 of human STEAP3 (NP_060704.2).

ADDITIONAL INFORMATION

Note STRICTLY FOR FURTHER SCIENTIFIC RESEARCH USE ONLY (RUO). MUST NOT TO BE USED IN DIAGNOSTIC OR THERAPEUTIC APPLICATIONS.



Western blot analysis of lysates from mouse heart, using STEAP3 Rabbit polyclonal antibody (STJ25729) at 1:1000 dilution. Secondary antibody: HRP Goat Anti-Rabbit IgG (H+L) (STJS000856) at 1:10000 dilution. Lysates/proteins: 25 µg per lane. Blocking buffer: 3% nonfat dry milk in TBST. Detection: ECL Enhanced Kit. Exposure time: 60s.